

Contract No. HK/2009/01

Contract Title : Wan Chai Development Phase II - Central - Wan Chai Bypass at HKCEC

Working Programme for Marine Works (Dredging and Backfilling)

ACTIVITY	START	FINISH	2010												2011												2012												2013																			
			Feb	Mar	Apr	May	Jun	Jul	Aug	Sep	Oct	Nov	Dec	Jan	Feb	Mar	Apr	May	Jun	Jul	Aug	Sep	Oct	Nov	Dec	Jan	Feb	Mar	Apr	May	Jun	Jul	Aug	Sep	Oct	Nov	Dec	Jan	Feb	Mar	Apr	May	Jun	Jul	Aug	Sep	Oct	Nov	Dec									
Submissions before Works Commencement																																																										
Submit silt curtain deployment plan	31/3/10	31/3/10	◆																																																							
Submit silt screen deployment plan	31/3/10	31/3/10	◆																																																							
Submit measures to mitigate noise impact	31/3/10	31/3/10	◆																																																							
Cross Harbour Watermains from WCN to TST (DP6)																																																										
Trench dredging for marine watermains installation	29/4/10	28/10/10				■																																																				
Backfilling for watermain	28/1/11	14/12/11													■																																											
Reclamation Works at HKCEC Water Channel (DP3)																																																										
Dredging at HKCEC Water Channel (Western Part)	1/6/10	1/8/10			■																																																					
Backfilling to +3.5mPD (Western Part)	17/8/10	6/2/11				■																																																				
Dredging at HKCEC Water Channel (Middle Part)	2/8/10	6/1/11				■																																																				
Backfilling to +3.5mPD (Middle Part)	21/2/11	1/6/11													■																																											
Dredging at HKCEC Water Channel (Eastern Part)	1/12/12	31/12/12																																					■																			
Backfilling to +3.5mPD (Eastern Part)	16/1/13	30/4/13																																					■																			

**Dredging & Reclamation Works Programme Summary
(based on Initial Works Programme Rev. 0)**

ID	Task Name	Duration	Start	2010 2011 2012 2013 2014 2015																							
				Q4	Q1	Q2	Q3	Q4	Q1	Q2	Q3	Q4	Q1	Q2	Q3	Q4	Q1	Q2	Q3	Q4	Q1	Q2	Q3	Q4			
1	HK/2009/02-Marine & Reclamation Works	2008 d	Thu 28/1/10	[Summary bar from Q4 2009 to Q4 2015]																							
2	Contract Commencement	0 d	Thu 28/1/10	[Milestone diamond at start of Q4 2009]																							
3	General	1879 d	Mon 22/2/10	[Summary bar from Q1 2010 to Q4 2015]																							
4	Submission & obtain approval for marine GI	21 d	Mon 22/2/10	[Task bar in Q1 2010]																							
5	Stage 1 Marine GI for reclamation	30 d	Mon 15/3/10	[Task bar in Q1 2010]																							
6	Engineer's Design review for Dredging of WCR1, WCR2 & WCR4	30 d	Mon 22/3/10	[Task bar in Q1 2010]																							
7	Relocation of New Star Ferry Pier	0 d	Tue 18/3/14	[Milestone diamond in Q3 2014]																							
8	Demolition of Existing Star Ferry Pier	100 d	Tue 18/3/14	[Task bar in Q3 2014]																							
9	Stage 2 Marine GI for Reclamation	14 d	Tue 18/3/14	[Task bar in Q3 2014]																							
10	Engineer's Design review for Dredging of WCR3	21 d	Tue 25/3/14	[Task bar in Q3 2014]																							
11	Complete Diversion of Hung Hing Road Traffic Back to Original	20 d	Fri 6/2/15	[Task bar in Q2 2015]																							
12	Excavate & remove top of d-wall for permanent seawall construction	50 d	Wed 25/2/15	[Task bar in Q2 2015]																							
13	Submarine Outfall	500 d	Tue 21/9/10	[Summary bar from Q3 2010 to Q4 2011]																							
14	Dredging, Laying and Backfilling of Submarine Outfall Pipe at Sea	500 d	Tue 21/9/10	[Task bar from Q3 2010 to Q4 2011]																							
15	Phase 1 - WCR1	158 d	Wed 21/4/10	[Summary bar from Q1 2010 to Q4 2010]																							
16	Mobilization of plants	1 d	Wed 21/4/10	[Task bar in Q1 2010]																							
17	Seabed dredging	63 d	Wed 21/4/10	[Task bar in Q1 2010]																							
18	Bedding Filling and Permanent seawall (precast cassion)	60 d	Tue 22/6/10	[Task bar in Q2 2010]																							
19	Bulk reclamation	37 d	Fri 20/8/10	[Task bar in Q2 2010]																							
20	Phase 2 - WCR2	149 d	Thu 1/3/12	[Summary bar from Q3 2011 to Q4 2012]																							
21	Mobilization of plants	1 d	Thu 1/3/12	[Task bar in Q3 2011]																							
22	Temp seawall and Seabed dredging	77 d	Thu 1/3/12	[Task bar in Q3 2011]																							
23	Bulk reclamation	73 d	Wed 16/5/12	[Task bar in Q4 2011]																							
24	Phase 3 - TWCR4 & WCR4	98 d	Sat 28/4/12	[Summary bar from Q4 2011 to Q4 2012]																							
25	Mobilization of plants	1 d	Sat 28/4/12	[Task bar in Q4 2011]																							
26	Temp Seawall and Seabed dredging	75 d	Sat 28/4/12	[Task bar in Q4 2011]																							
27	Bulk & temp reclamation	24 d	Wed 11/7/12	[Task bar in Q3 2012]																							
28	Phase 4 - WCR3	294 d	Tue 18/3/14	[Summary bar from Q3 2013 to Q4 2014]																							
29	Mobilization of plants	1 d	Tue 18/3/14	[Task bar in Q3 2013]																							
30	Seabed dredging for Permanent Seawall	112 d	Tue 18/3/14	[Task bar in Q3 2013]																							
31	Backfill and permanent seawall (precast cassion)	108 d	Tue 8/7/14	[Task bar in Q4 2013]																							
32	Bulk reclamation	74 d	Fri 24/10/14	[Task bar in Q4 2013]																							
33	Phase 5 - Construct Permanent Seawall Blocks along curved coastline & Remove TWCR4	105 d	Wed 15/4/15	[Summary bar from Q4 2014 to Q4 2015]																							
34	Mobilization of plants	1 d	Wed 15/4/15	[Task bar in Q4 2014]																							
35	Dredging and Filling for permanent seawall construction	50 d	Wed 15/4/15	[Task bar in Q4 2014]																							
36	Construction of Permanent Seawall Blocks for curved coastline	56 d	Wed 3/6/15	[Task bar in Q1 2015]																							
37	Remove temp seawall and reinstate the location of TWCR4	30 d	Mon 29/6/15	[Task bar in Q1 2015]																							

Project: Reclamation Works Programme
Date: Tue 9/3/10

Task		Summary		Rolled Up Progress		Project Summary	
Progress		Rolled Up Task		Split		Group By Summary	
Milestone		Rolled Up Milestone		External Tasks		Deadline	

Activity ID	Cal ID	Activity Description	Orig Dur	Early Start	Early Finish	Year															
						2010	2011	2012	2013	2014	2015	2016	2017								
TCBR1E (TS1 Area)																					
105	1	TCBR1E(TS1)-dredging+rockfill(pre. for seawall)	86	03DEC10*	26FEB11																
110	1	TCBR1E (TS1)-temporary reclamation	69	28JAN11*	06APR11																
155	1	TCBR1E (TS1)- removal of temporary reclamation	27	30JAN12*	25FEB12																
TCBR4																					
100	1	Maintenance dredging for navigation safety for	7	20NOV10*	26NOV10																
TCBR2 + TCBR3 (TS2 Area)																					
115	1	TCBR2&TCBR3(TS2)- Maintenance dredging for	5	15NOV10*	19NOV10																
117	1	TCBR2&TCBR3(TS2)-dredge+rockfill seabed	64	16DEC11*	17FEB12																
120	1	TCBR2&TCBR3(TS2) --temporary reclamation	115	26FEB12*	19JUN12																
160	1	TCBR2&TCBR3(TS2-removal temporary reclamation	57	18AUG13*	13OCT13																
TCBR1W (TS4 Area)																					
125	1	TCBR1W(TS4)-dredging+rockfill(pre. for seawall)	40	19DEC10*	27JAN11																
130	1	TCBR1W(TS4) --temporary reclamation	68	28JAN11	05APR11																
165	1	TCBR1W(TS4)--removal temporary reclamation	26	27OCT13*	21NOV13																
TPCWAE																					
135	1	TPCWAE-dredging+rockfill(pre. for seawall)	55	03DEC10*	26JAN11																
140	1	TPCWAE --temporary reclamation	77	27JAN11	13APR11																
170	1	TPCWAE--removal temporary reclamation	28	28SEP13*	25OCT13																
TPCWAW																					
145	1	TPCWAW-dredging+rockfill(pre. for seawall)	47	28OCT13*	13DEC13																
150	1	TPCWAW --temporary reclamation	83	14DEC13	06MAR14																
175	1	TPCWAW--removal temporary reclamation	50	02JUL15*	20AUG15																

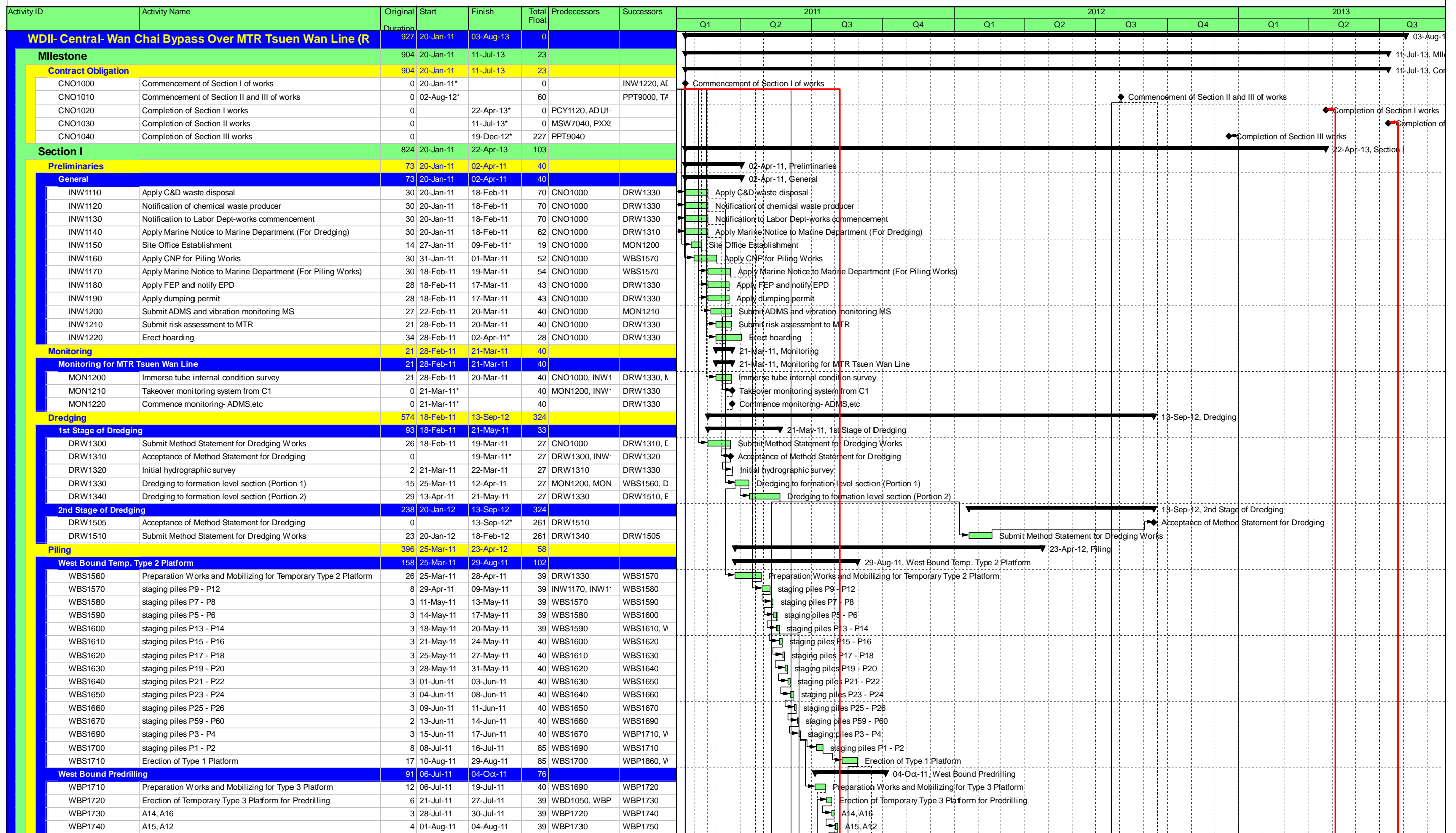
 Early Bar
 Progress Bar
 Critical Activity

?Primavera Systems, Inc.

EP02 CHINA STATE CONSTRUCTION ENGG LTD Sheet 1 of 1

CONTRACT NO. HY/2009/15: CENTRAL WAN CHAI BYPASS- TUNNEL (CBTS SECTION)

Prepared based on IWP Rev. 0
Date Prepared: 28 Oct 2010



	Date	Revision	Ch...	Approved
Actual Work	31-May-12	Rev. E	MF	KT
Remaining Work	23-Jun-12	Rev. F	MF	KT
Critical Remaining ...	19-Jul-12	Rev. G	MF	KT
Milestone	14-Aug-12	Rev. H	MF	KT
Summary	19-Sep-12	Rev. I	MF	KT
	21-Nov-12	Rev. J	MF	KT
	19-Feb-13	Rev. K	MF	KT
	05-Mar-13	Rev. L	MF	KT

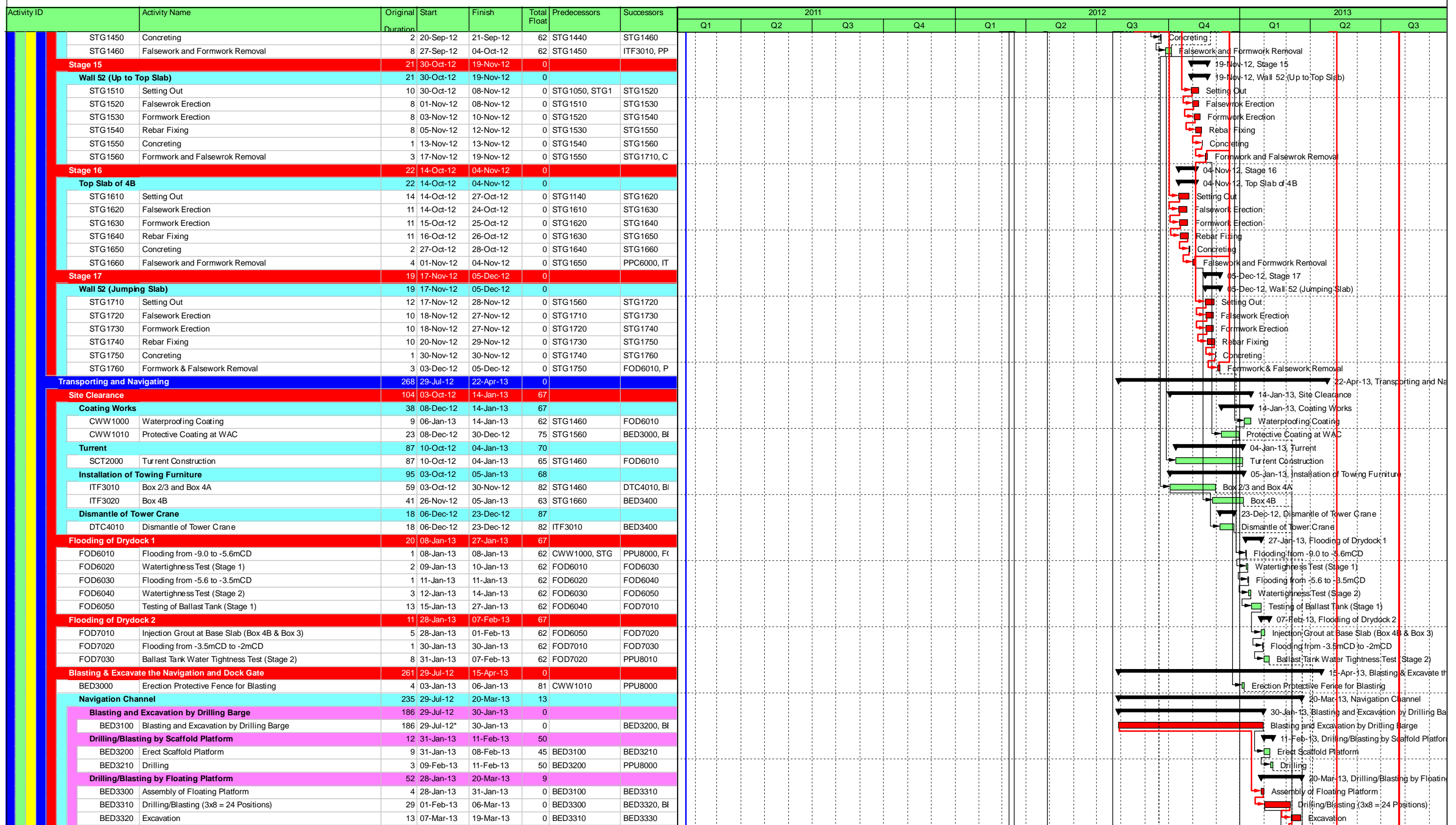
Contract No.: HK/2010/06
Wan Chai Development Phase II-
Central-Wan Chai Bypass over MTR Tuen Wan Line
 (Works Programme - Rev. L)



金門 - 利達聯營
Gammon - Leader Joint Venture



利達 LEADER

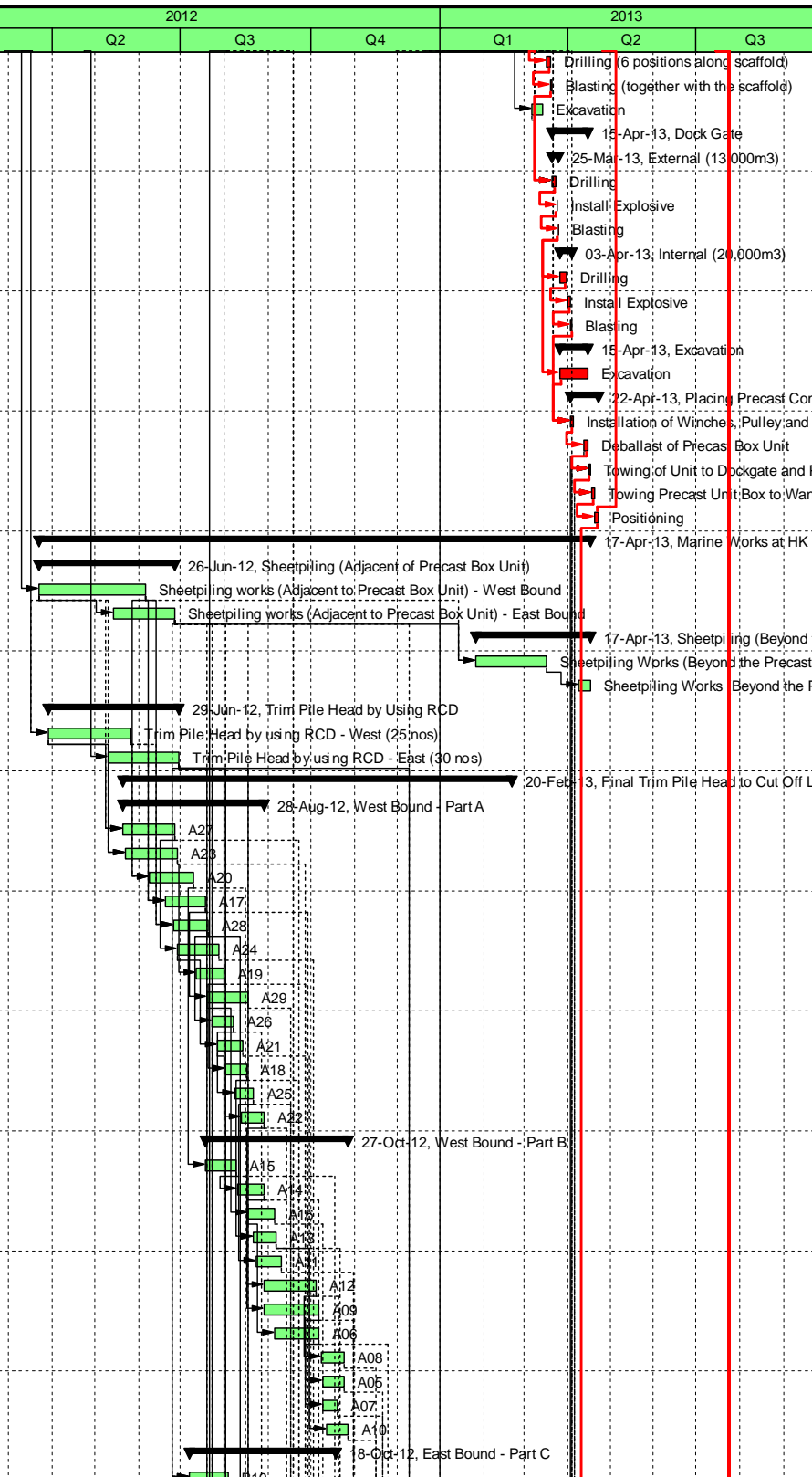


	Date	Revision	Ch...	Approved
Actual Work	31-May-12	Rev. E	MF	KT
Remaining Work	23-Jun-12	Rev. F	MF	KT
Critical Remaining ...	19-Jul-12	Rev. G	MF	KT
Milestone	14-Aug-12	Rev. H	MF	KT
Summary	19-Sep-12	Rev. I	MF	KT
	21-Nov-12	Rev. J	MF	KT
	19-Feb-13	Rev. K	MF	KT
	05-Mar-13	Rev. L	MF	KT

Contract No.: HK/2010/06
Wan Chai Development Phase II-
Central-Wan Chai Bypass over MTR Tuen Wan Line
 (Works Programme - Rev. L)



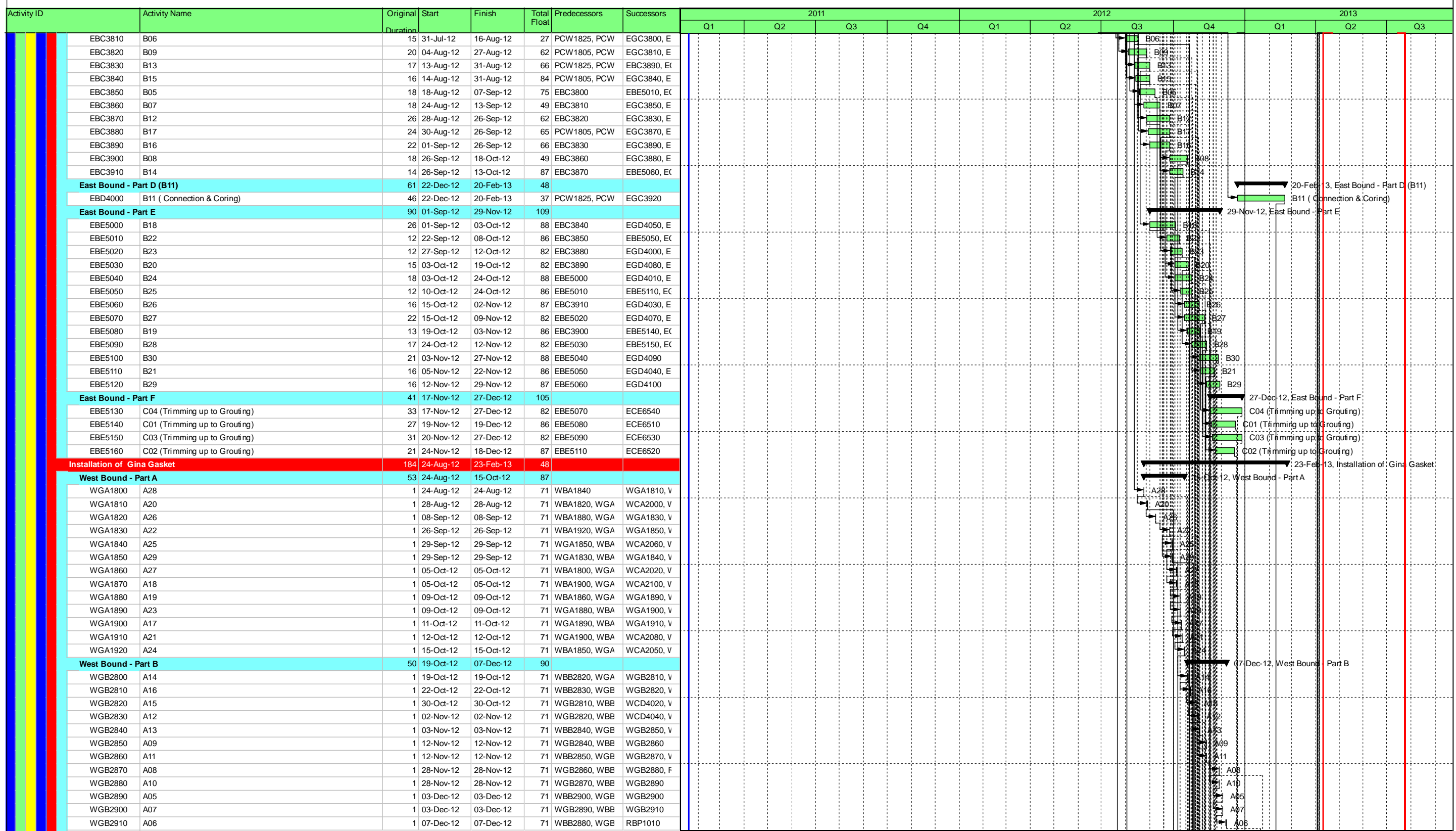
Activity ID	Activity Name	Original Duration	Start	Finish	Total Float	Predecessors	Successors	2011				2012				2013		
								Q1	Q2	Q3	Q4	Q1	Q2	Q3	Q4	Q1	Q2	Q3
BED3330	Drilling (6 positions along scaffold)	3	17-Mar-13	19-Mar-13	0	BED3320	BED3340											
BED3340	Blasting (together with the scaffold)	1	20-Mar-13	20-Mar-13	0	BED3330	BED3400											
BED3350	Excavation	9	06-Mar-13	14-Mar-13	15	BED3310	BED3400											
Dock Gate		26	21-Mar-13	15-Apr-13	0													
External (13,000m3)		5	21-Mar-13	25-Mar-13	0													
BED3400	Drilling	3	21-Mar-13	23-Mar-13	0	ITF3010, DTC40	BED3410											
BED3410	Install Explosive	1	24-Mar-13	24-Mar-13	0	BED3400	BED3420											
BED3420	Blasting	1	25-Mar-13	25-Mar-13	0	BED3410	BED3500, BI											
Internal (20,000m3)		9	26-Mar-13	03-Apr-13	0													
BED3500	Drilling	6	26-Mar-13	31-Mar-13	0	BED3420	BED3510											
BED3510	Install Explosive	2	01-Apr-13	02-Apr-13	0	BED3500	BED3520											
BED3520	Blasting	1	03-Apr-13	03-Apr-13	0	BED3510	PPU8000											
Excavation		21	26-Mar-13	15-Apr-13	0													
BED4000	Excavation	21	26-Mar-13	15-Apr-13	0	BED3420	PPU8000											
Placing Precast Combined Unit		20	03-Apr-13	22-Apr-13	0													
PPU8000	Installation of Winches, Pulley and Survey Tower at Box 4B top sl	2	03-Apr-13	04-Apr-13	0	FOD6010, BED3	PPU8005											
PPU8005	Deballast of Precast Box Unit	4	12-Apr-13	15-Apr-13	0	PPU8000	PPU8010, DI											
PPU8010	Towing of Unit to Dockgate and Preparation for Towing	2	16-Apr-13	17-Apr-13	0	PPU8005, FPP1	PPU8020											
PPU8020	Towing Precast Unit Box to Wan Chai	2	18-Apr-13	19-Apr-13	0	PPU8010, DRW	PPU8030											
PPU8030	Positioning	2	20-Apr-13	22-Apr-13	0	PPU8020	SSU9010, CI											
Marine Works at HK		392	22-Mar-12	17-Apr-13	108													
Sheetpiling (Adjacent of Precast Box Unit)		97	22-Mar-12	26-Jun-12	65													
PCW1800	Sheetpiling works (Adjacent to Precast Box Unit) - West Bound	59	22-Mar-12	05-Jun-12	55	WBC2320	PCW1810, V											
PCW1805	Sheetpiling works (Adjacent to Precast Box Unit) - East Bound	37	14-May-12	26-Jun-12	55	PCW1800	EBC3820, EI											
Sheetpiling (Beyond the Precast Box Unit)		82	26-Jan-13	17-Apr-13	108													
PCW1810	Sheetpiling Works (Beyond the Precast Box Unit) - (Eastern)	40	26-Jan-13	16-Mar-13	89	PCW1800, PCW	PCW1820											
PCW1820	Sheetpiling Works (Beyond the Precast Box Unit) - (Western)	9	08-Apr-13	17-Apr-13	89	PCW1810												
Trim Pile Head by Using RCD		93	29-Mar-12	29-Jun-12	80													
PCW1815	Trim Pile Head by using RCD - West (25 nos)	45	29-Mar-12	26-May-12	95	EBC2330, PCW1	WBA1820, V											
PCW1825	Trim Pile Head by using RCD - East (30 nos)	43	10-May-12	29-Jun-12	27	EBC2330	EBC3830, EI											
Final Trim Pile Head to Cut Off Level		276	21-May-12	20-Feb-13	50													
West Bound - Part A		100	21-May-12	28-Aug-12	118													
WBA1800	A27	31	21-May-12	26-Jun-12	95	PCW1815, PCW	WGA1860, V											
WBA1810	A23	31	23-May-12	28-Jun-12	97	PCW1800, PCW	WBA1860, V											
WBA1820	A20	24	09-Jun-12	09-Jul-12	94	PCW1815, PCW	WBB2810, V											
WBA1830	A17	23	20-Jun-12	18-Jul-12	107	PCW1800, PCW	WGA1900, V											
WBA1840	A28	21	26-Jun-12	20-Jul-12	71	PCW1815, PCW	WGA1800, V											
WBA1850	A24	25	28-Jun-12	27-Jul-12	95	WBA1800	WGA1920, V											
WBA1860	A19	17	12-Jul-12	31-Jul-12	97	WBA1810	WGA1880, V											
WBA1870	A29	26	19-Jul-12	17-Aug-12	107	WBA1830	WBB2830, V											
WBA1880	A26	14	23-Jul-12	07-Aug-12	98	WBA1840	WGA1820, V											
WBA1890	A21	15	27-Jul-12	13-Aug-12	95	WBA1850	WGA1910, V											
WBA1900	A18	14	01-Aug-12	16-Aug-12	97	WBA1860	WGA1870, V											
WBA1910	A25	12	08-Aug-12	21-Aug-12	104	WBA1880	WBB2850, V											
WBA1920	A22	14	13-Aug-12	28-Aug-12	95	WBA1890	WGA1830, V											
West Bound - Part B		102	18-Jul-12	27-Oct-12	125													
WBB2810	A15	20	18-Jul-12	09-Aug-12	94	WBA1820	WBB2820, V											
WBB2820	A14	16	10-Aug-12	28-Aug-12	94	WBB2810	WBB2860, V											
WBB2830	A16	17	17-Aug-12	05-Sep-12	107	WBA1870	WGB2810, V											
WBB2840	A13	15	21-Aug-12	06-Sep-12	97	WBA1900	WBB2920, V											
WBB2850	A11	16	23-Aug-12	10-Sep-12	121	WBA1910	WGB2860											
WBB2860	A12	30	29-Aug-12	04-Oct-12	94	WBB2820	WBB2890, V											
WBB2870	A09	32	29-Aug-12	06-Oct-12	100	WBA1920	WBB2900, V											
WBB2880	A06	26	05-Sep-12	06-Oct-12	107	WBB2830	WGB2910, V											
WBB2890	A08	14	08-Oct-12	24-Oct-12	100	WBB2860	WGB2870											
WBB2900	A05	13	09-Oct-12	24-Oct-12	104	WBB2870	WGB2890											
WBB2910	A07	10	09-Oct-12	19-Oct-12	107	WBB2880	WGB2900											
WBB2920	A10	13	12-Oct-12	27-Oct-12	97	WBB2840	WGB2880											
East Bound - Part C		104	07-Jul-12	18-Oct-12	102													
EBC3800	B10	24	07-Jul-12	03-Aug-12	75	PCW1825, PCW	EGC3900, E											



	Actual Work		
	Remaining Work		
	Critical Remaining ...		
	Milestone		
	Summary		
Date	Revision	Ch...	Approved
31-May-12	Rev. E	MF	KT
23-Jun-12	Rev. F	MF	KT
19-Jul-12	Rev. G	MF	KT
14-Aug-12	Rev. H	MF	KT
19-Sep-12	Rev. I	MF	KT
21-Nov-12	Rev. J	MF	KT
19-Feb-13	Rev. K	MF	KT
05-Mar-13	Rev. L	MF	KT

Contract No.: HK/2010/06
 Wan Chai Development Phase II-
 Central-Wan Chai Bypass over MTR Tuen Wan Line
 (Works Programme - Rev. L)

金門 - 利達聯營
 Gammon - Leader Joint Venture

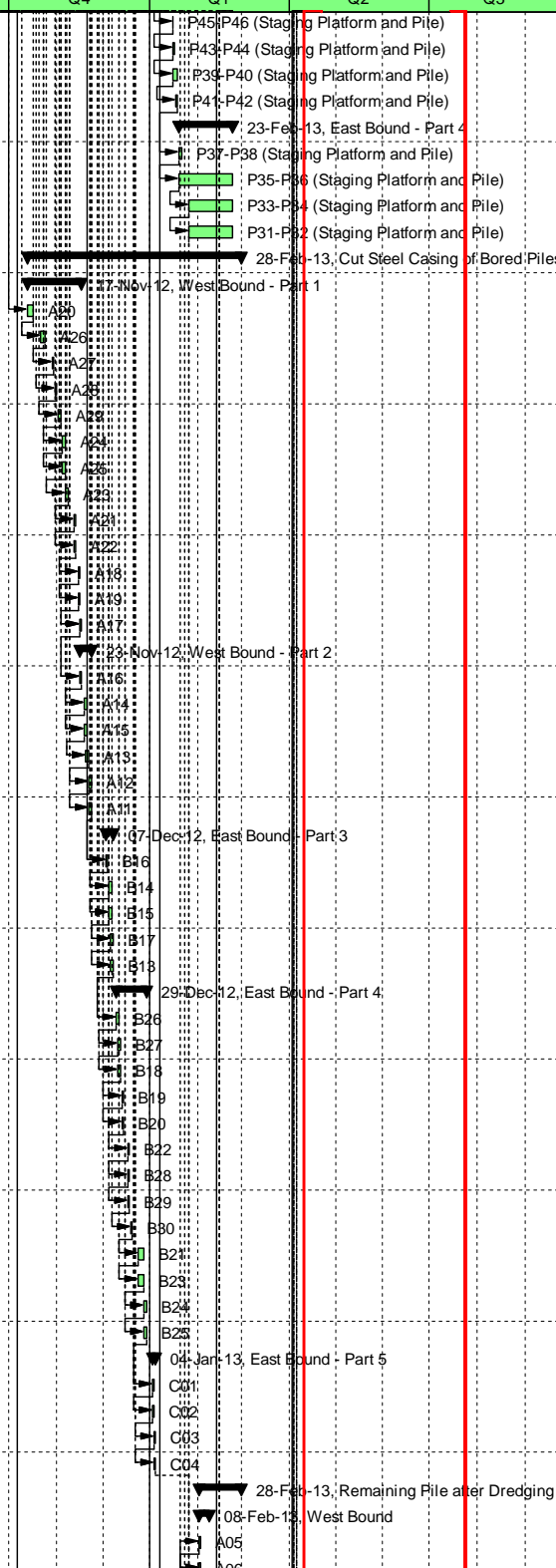


	Actual Work		
	Remaining Work		
	Critical Remaining ...		
	Milestone		
	Summary		
Date	Revision	Ch...	Approved
31-May-12	Rev. E	MF	KT
23-Jun-12	Rev. F	MF	KT
19-Jul-12	Rev. G	MF	KT
14-Aug-12	Rev. H	MF	KT
19-Sep-12	Rev. I	MF	KT
21-Nov-12	Rev. J	MF	KT
19-Feb-13	Rev. K	MF	KT
05-Mar-13	Rev. L	MF	KT

Contract No.: HK/2010/06
Wan Chai Development Phase II-
Central-Wan Chai Bypass over MTR Tuen Wan Line
 (Works Programme - Rev. L)

金門 - 利達聯營
Gammon - Leader Joint Venture

Activity ID	Activity Name	Original Duration	Start	Finish	Total Float	Predecessors	Successors	2011				2012				2013		
								Q1	Q2	Q3	Q4	Q1	Q2	Q3	Q4	Q1	Q2	Q3
ESPD4050	P45-P46 (Staging Platform and Pile)	1	15-Jan-13	15-Jan-13	60	ESPD4040	ESPD4060											
ESPD4060	P43-P44 (Staging Platform and Pile)	2	15-Jan-13	16-Jan-13	60	ESPD4050	ESPD4070											
ESPD4070	P39-P40 (Staging Platform and Pile)	4	15-Jan-13	18-Jan-13	60	ESPD4060	ESPD4080											
ESPD4080	P41-P42 (Staging Platform and Pile)	2	17-Jan-13	18-Jan-13	60	ESPD4070	ESPB3000											
East Bound - Part 4		36	19-Jan-13	23-Feb-13	76													
ESPB3000	P37-P38 (Staging Platform and Pile)	2	19-Jan-13	21-Jan-13	60	ESPD4080	ESPB3010											
ESPB3010	P35-P36 (Staging Platform and Pile)	28	19-Jan-13	23-Feb-13	60	ESPB3000	ESPB3020											
ESPB3020	P33-P34 (Staging Platform and Pile)	22	26-Jan-13	23-Feb-13	60	ESPB3010	ESPB3030											
ESPB3030	P31-P32 (Staging Platform and Pile)	22	26-Jan-13	23-Feb-13	60	ESPB3020	DRW1520											
Cut Steel Casing of Bored Piles		139	13-Oct-12	28-Feb-13	48													
West Bound - Part 1		36	13-Oct-12	17-Nov-12	98													
WCA2000	A20	3	13-Oct-12	16-Oct-12	78	WGA1810	WCA2010											
WCA2010	A26	2	22-Oct-12	24-Oct-12	78	WGA1820, WCA2000	WCA2020											
WCA2020	A27	2	29-Oct-12	30-Oct-12	78	WGA1860, WCA2010	WCA2030											
WCA2030	A28	2	31-Oct-12	01-Nov-12	78	WCA2020, WGA1860	WCA2040											
WCA2040	A29	2	02-Nov-12	03-Nov-12	78	WGA1850, WCA2030	WCA2050											
WCA2050	A24	2	05-Nov-12	06-Nov-12	78	WGA1920, WCA2040	WCA2060											
WCA2060	A25	2	05-Nov-12	06-Nov-12	78	WCA2050, WGA1920	WCA2070											
WCA2070	A23	2	07-Nov-12	08-Nov-12	78	WCA2060, WGA1920	WCA2080											
WCA2080	A21	2	12-Nov-12	13-Nov-12	78	WGA1910, WCA2070	WCA2090											
WCA2090	A22	2	12-Nov-12	13-Nov-12	78	WGA1830, WCA2080	WCA2100											
WCA2100	A18	2	15-Nov-12	16-Nov-12	78	WGA1870, WCA2090	WCA2110											
WCA2110	A19	2	15-Nov-12	16-Nov-12	78	WCA2100, WGA1870	WCA2120											
WCA2120	A17	2	16-Nov-12	17-Nov-12	78	WCA2110, WGA1870	WCD4000											
West Bound - Part 2		8	16-Nov-12	23-Nov-12	98													
WCD4000	A16	2	16-Nov-12	17-Nov-12	78	WGB2810, WCA2120	WCD4010											
WCD4010	A14	2	19-Nov-12	20-Nov-12	78	WCD4000, WGB2810	WCD4020											
WCD4020	A15	2	19-Nov-12	20-Nov-12	78	WGB2820, WCD4010	WCD4030											
WCD4030	A13	2	20-Nov-12	21-Nov-12	78	WCD4020, WGB2820	WCD4040											
WCD4040	A12	2	22-Nov-12	23-Nov-12	78	WCD4030, WGB2820	WCD4050											
WCD4050	A11	2	22-Nov-12	23-Nov-12	78	WCD4040, WGB2820	ECC5000											
East Bound - Part 3		5	03-Dec-12	07-Dec-12	98													
ECC5000	B16	2	03-Dec-12	04-Dec-12	78	EGC3890, WCD4050	ECC5010											
ECC5010	B14	2	05-Dec-12	06-Dec-12	78	ECC5000, EGC3890	ECC5020											
ECC5020	B15	2	05-Dec-12	06-Dec-12	78	EGC3840, ECC5010	ECC5030											
ECC5030	B17	2	06-Dec-12	07-Dec-12	78	ECC5020, EGC3840	ECC5040											
ECC5040	B13	2	06-Dec-12	07-Dec-12	78	EGC3860, ECC5030	ECE6000											
East Bound - Part 4		20	10-Dec-12	29-Dec-12	101													
ECE6000	B26	2	10-Dec-12	11-Dec-12	78	EGD4030, ECC5040	ECE6010											
ECE6010	B27	2	11-Dec-12	12-Dec-12	78	EGD4070, ECE6000	ECE6020											
ECE6020	B18	2	11-Dec-12	12-Dec-12	78	EGD4050, ECE6010	ECE6030											
ECE6030	B19	2	13-Dec-12	14-Dec-12	78	EGD4110, ECE6020	ECE6040											
ECE6040	B20	2	13-Dec-12	14-Dec-12	78	EGD4080, ECE6030	ECE6050											
ECE6050	B22	2	17-Dec-12	18-Dec-12	78	EGD4100, ECE6040	ECE6060											
ECE6060	B28	2	17-Dec-12	18-Dec-12	78	EGD4120, ECE6050	ECE6070											
ECE6070	B29	2	17-Dec-12	18-Dec-12	78	EGD4060, ECE6060	ECE6080											
ECE6080	B30	2	19-Dec-12	20-Dec-12	78	EGD4090, ECE6070	ECE6090											
ECE6090	B21	2	24-Dec-12	27-Dec-12	78	EGD4040, ECE6080	ECE6100											
ECE6100	B23	2	24-Dec-12	27-Dec-12	78	EGD4000, ECE6090	ECE6110											
ECE6110	B24	2	28-Dec-12	29-Dec-12	78	EGD4010, ECE6100	ECE6120											
ECE6120	B25	2	28-Dec-12	29-Dec-12	78	EGD4020, ECE6110	ECE6510											
East Bound - Part 5		3	02-Jan-13	04-Jan-13	99													
ECE6510	C01	2	02-Jan-13	03-Jan-13	78	EBE5140, ECE6120	ECE6520											
ECE6520	C02	2	02-Jan-13	03-Jan-13	78	EBE5160, ECE6120	ECE6530											
ECE6530	C03	2	03-Jan-13	04-Jan-13	78	EBE5150, ECE6120	ECE6540											
ECE6540	C04	2	03-Jan-13	04-Jan-13	78	EBE5130, ECE6120	DRW1520											
Remaining Pile after Dredging		28	01-Feb-13	28-Feb-13	48													
West Bound		8	01-Feb-13	08-Feb-13	35													
RBP1000	A05	2	01-Feb-13	02-Feb-13	27	DRW1515	RBP1010											
RBP1010	A06	2	01-Feb-13	02-Feb-13	27	WGB2910, RBP1000	RBP1020											



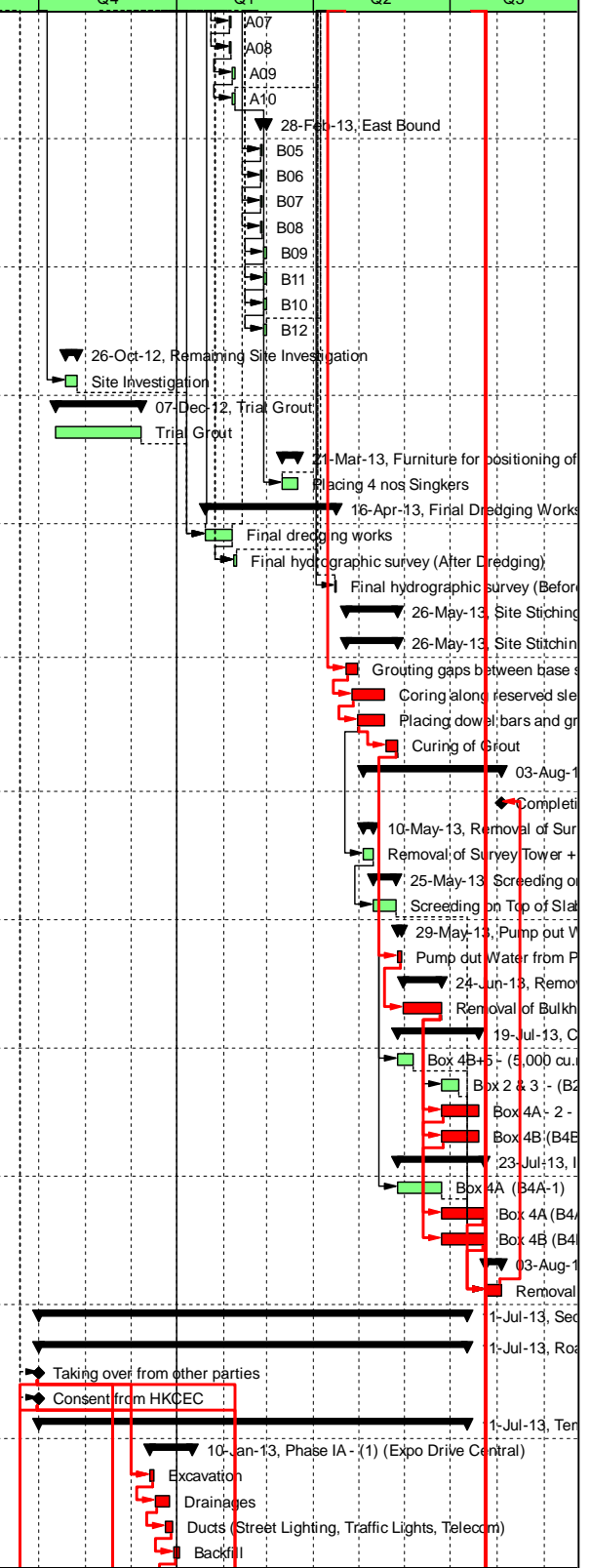
■	Actual Work
■	Remaining Work
■	Critical Remaining ...
◆	Milestone
➤	Summary

Date	Revision	Ch...	Approved
31-May-12	Rev. E	MF	KT
23-Jun-12	Rev. F	MF	KT
19-Jul-12	Rev. G	MF	KT
14-Aug-12	Rev. H	MF	KT
19-Sep-12	Rev. I	MF	KT
21-Nov-12	Rev. J	MF	KT
19-Feb-13	Rev. K	MF	KT
05-Mar-13	Rev. L	MF	KT

Contract No.: HK/2010/06
Wan Chai Development Phase II-
Central-Wan Chai Bypass over MTR Tuen Wan Line
 (Works Programme - Rev. L)



Activity ID	Activity Name	Original Duration	Start	Finish	Total Float	Predecessors	Successors	2011				2012				2013		
								Q1	Q2	Q3	Q4	Q1	Q2	Q3	Q4	Q1	Q2	Q3
RBP1020	A07	2	04-Feb-13	05-Feb-13	27	RBP1010	RBP1030											
RBP1030	A08	2	04-Feb-13	05-Feb-13	27	WGB2870, RBP1010	RBP1040											
RBP1040	A09	3	06-Feb-13	08-Feb-13	27	RBP1030	RBP1050											
RBP1050	A10	3	06-Feb-13	08-Feb-13	27	RBP1040	FPP1515, PF											
East Bound																		
RBP2000	B05	2	25-Feb-13	26-Feb-13	37	DRW1515, EGC	RBP2010											
RBP2010	B06	2	25-Feb-13	26-Feb-13	37	RBP2000	RBP2030											
RBP2030	B07	2	25-Feb-13	26-Feb-13	37	RBP2010	RBP2040											
RBP2040	B08	2	25-Feb-13	26-Feb-13	37	RBP2030	RBP2050											
RBP2050	B09	2	27-Feb-13	28-Feb-13	37	RBP2040	RBP2060											
RBP2060	B11	2	27-Feb-13	28-Feb-13	37	EGC3920, RBP2050	RBP2070											
RBP2070	B10	2	27-Feb-13	28-Feb-13	37	EGC3900, RBP2060	RBP2080											
RBP2080	B12	2	27-Feb-13	28-Feb-13	37	EGC3830, RBP2070	PPU8020											
Remaining Site Investigation																		
RSI6000	Site Investigation	6	19-Oct-12	26-Oct-12	96	WGA1850	DRW1515											
Trial Grout																		
TGR6500	Trial Grout	48	12-Oct-12*	07-Dec-12	60		DRW1515											
Furniture for positioning of precast unit																		
FPP1515	Placing 4 nos Singlers	11	11-Mar-13	21-Mar-13	36													
Final Dredging Works																		
DRW1515	Final dredging works	16	19-Jan-13	06-Feb-13	27	TGR6500, RSI6000	DRW1520, F											
DRW1520	Final hydrographic survey (After Dredging)	3	07-Feb-13	09-Feb-13	50	DRW1515, ESPE	PPU8020											
DRW1530	Final hydrographic survey (Before Positioning of Precast Box Unit)	2	15-Apr-13	16-Apr-13	1	PPU8005	PPU8010											
Site Stitching of Precast Box Unit																		
Site Stitching Precast Combined Unit																		
SSU9010	Grouting gaps between base slab and bored piles within the gash	7	23-Apr-13	30-Apr-13	0	PPU8030	SSU9020											
SSU9020	Coring along reserved sleeve pipe to bored piles (816nos.)	18	26-Apr-13	18-May-13	0	SSU9010	SSU9030											
SSU9030	Placing dowel bars and grouting works (816nos.)	15	30-Apr-13	18-May-13	0	SSU9020	SSU9040, M											
SSU9040	Curing of Grout	8	19-May-13	26-May-13	0	SSU9030	MPU10600, I											
Minor Outstanding Works inside Precast Box Unit after Stitching																		
MWP1100	Completion of Outstanding Works inside Precast Box Unit after S	0		03-Aug-13*	0	MPU10900												
Removal of Survey Tower + Towing Furniture																		
MPU10100	Removal of Survey Tower + Towing Furniture	6	04-May-13	10-May-13	48	SSU9030	MPU10200											
Screeding on Top of Slab																		
MPU10200	Screeding on Top of Slab	15	11-May-13	25-May-13	59													
Pump out Water from Pre-cast Box Unit																		
MPU10300	Pump out Water from Pre-cast Box Unit	3	27-May-13	29-May-13	0	SSU9040	MPU10400											
Removal of Bulkheads																		
MPU10400	Removal of Bulkheads	26	30-May-13	24-Jun-13	0	MPU10300	MPU10510, I											
Construction of Drain Pipes, Profile Barriers, Foam Concrete and Infill Concrete																		
MPU10500	Box 4B+5 - (5,000 cu.m) (Foam Concrete)	10	27-May-13	06-Jun-13	38	SSU9040	MPU10900											
MPU10510	Box 2 & 3 - (B2-1/B2-2/B3) (5,000 cu.m) (Foam Concrete)	10	25-Jun-13	06-Jul-13	14	MPU10400	MPU10900											
MPU10520	Box 4A - 2 - (4BA-2) (Concrete Infill)	21	25-Jun-13	19-Jul-13	0	MPU10400	MPU10620											
MPU10530	Box 4B (B4B-1/B4B-2) (Concrete Infill)	21	25-Jun-13	19-Jul-13	0	MPU10400	MPU10630											
Intermediate Slab																		
MPU10600	Box 4A (B4A-1)	24	27-May-13	24-Jun-13	24	SSU9040	MPU10900											
MPU10620	Box 4A (B4A-2)	24	25-Jun-13	23-Jul-13	0	MPU10520	MPU10900											
MPU10630	Box 4B (B4B-1)	24	25-Jun-13	23-Jul-13	0	MPU10530	MPU10900											
Removal of Turrets																		
MPU10900	Removal of Turrets	11	24-Jul-13	03-Aug-13	0	MPU10510, MPL	MWP1100											
Section II																		
Road Works																		
TAR8000	Taking over from other parties	0	01-Oct-12*		0	CNO1010	P1A1000, P1											
TAR8010	Consent from HKCEC	0	01-Oct-12*		0	CNO1010	P1A1000, P1											
Temporary Access Road at HKCEC West Bridge																		
Phase IA - (1) (Expo Drive Central)																		
P1A1000	Excavation	4	13-Dec-12	16-Dec-12	0	TAR8000, TAR8010	P1A1010											
P1A1010	Drainages	10	17-Dec-12	26-Dec-12	0	P1A1000	P1A1020											
P1A1020	Ducts (Street Lighting, Traffic Lights, Telecom)	5	24-Dec-12	28-Dec-12	0	P1A1010	P1A1030											
P1A1030	Backfill	5	29-Dec-12	02-Jan-13	0	P1A1020	P1A1040											



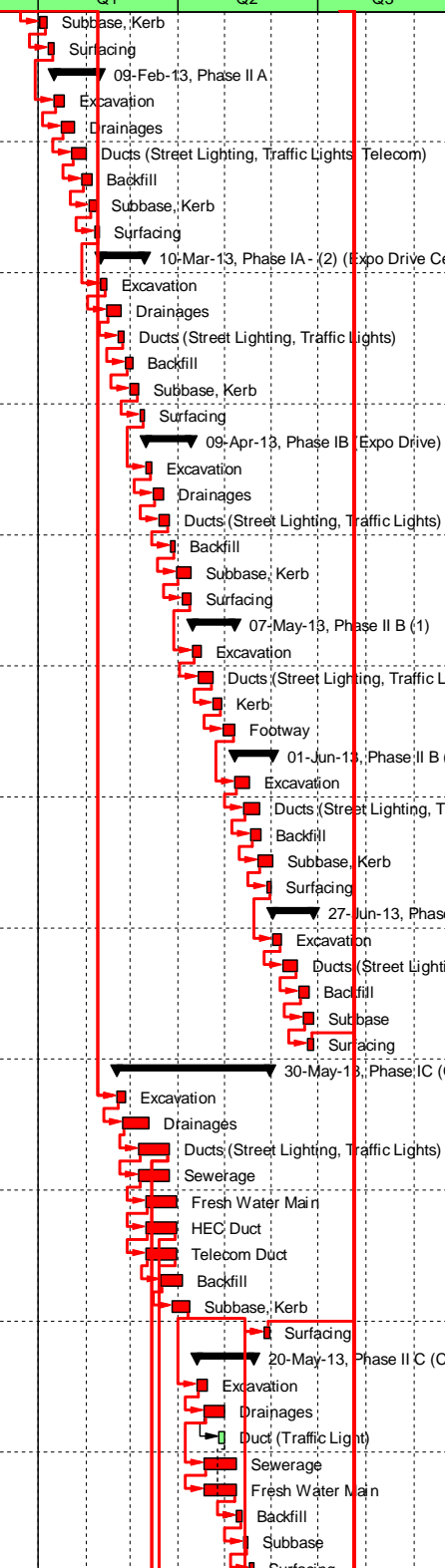
 Actual Work	Date	Revision	Ch...	Approved
 Remaining Work	31-May-12	Rev. E	MF	KT
 Critical Remaining ...	23-Jun-12	Rev. F	MF	KT
◆ Milestone	19-Jul-12	Rev. G	MF	KT
▶ Summary	14-Aug-12	Rev. H	MF	KT
	19-Sep-12	Rev. I	MF	KT
	21-Nov-12	Rev. J	MF	KT
	19-Feb-13	Rev. K	MF	KT
	05-Mar-13	Rev. L	MF	KT

Contract No.: HK/2010/06
Wan Chai Development Phase II-
Central-Wan Chai Bypass over MTR Tuen Wan Line
 (Works Programme - Rev. L)

金門 - 利達聯營

Gammon - Leader Joint Venture

Activity ID	Activity Name	Original Duration	Start	Finish	Total Float	Predecessors	Successors	2011				2012				2013		
								Q1	Q2	Q3	Q4	Q1	Q2	Q3	Q4	Q1	Q2	Q3
P1A1040	Subbase, Kerb	6	01-Jan-13	06-Jan-13	0	P1A1030	P1A1050											
P1A1050	Surfacing	4	07-Jan-13	10-Jan-13	0	P1A1040	P1A1200											
Phase II A		30	11-Jan-13	09-Feb-13	0													
P1A1200	Excavation	7	11-Jan-13	17-Jan-13	0	P1A1050	P1A1210											
P1A1210	Drainages	10	15-Jan-13	24-Jan-13	0	P1A1200	P1A1220											
P1A1220	Ducts (Street Lighting, Traffic Lights, Telecom)	10	22-Jan-13	31-Jan-13	0	P1A1210	P1A1230											
P1A1230	Backfill	7	29-Jan-13	04-Feb-13	0	P1A1220	P1A1240											
P1A1240	Subbase, Kerb	6	02-Feb-13	07-Feb-13	0	P1A1230	P1A1250											
P1A1250	Surfacing	4	06-Feb-13	09-Feb-13	0	P1A1240	P1A2060											
Phase IA - (2) (Expo Drive Central)		29	10-Feb-13	10-Mar-13	0													
P1A2060	Excavation	4	10-Feb-13	13-Feb-13	0	P1A1250	P1A2070											
P1A2070	Drainages	10	14-Feb-13	23-Feb-13	0	P1A2060	P1A2080											
P1A2080	Ducts (Street Lighting, Traffic Lights)	5	21-Feb-13	25-Feb-13	0	P1A2070	P1A2090											
P1A2090	Backfill	5	26-Feb-13	02-Mar-13	0	P1A2080	P1A2100											
P1A2100	Subbase, Kerb	6	01-Mar-13	06-Mar-13	0	P1A2090	P1A2110											
P1A2110	Surfacing	4	07-Mar-13	10-Mar-13	0	P1A2100	P1B2000											
Phase IB (Expo Drive)		30	11-Mar-13	09-Apr-13	0													
P1B2000	Excavation	5	11-Mar-13	15-Mar-13	0	P1A2110	P1B2010											
P1B2010	Drainages	7	16-Mar-13	22-Mar-13	0	P1B2000	P1B2020											
P1B2020	Ducts (Street Lighting, Traffic Lights)	7	20-Mar-13	26-Mar-13	0	P1B2010	P1B2030											
P1B2030	Backfill	4	27-Mar-13	30-Mar-13	0	P1B2020	P1B2040											
P1B2040	Subbase, Kerb	10	31-Mar-13	09-Apr-13	0	P1B2030	P1B2050											
P1B2050	Surfacing	6	04-Apr-13	09-Apr-13	0	P1B2040	P2B2100											
Phase II B (1)		28	10-Apr-13	07-May-13	0													
P2B2100	Excavation	7	10-Apr-13	16-Apr-13	0	P1B2050	P2B2110											
P2B2110	Ducts (Street Lighting, Traffic Lights)	10	14-Apr-13	23-Apr-13	0	P2B2100	P2B2120											
P2B2120	Kerb	6	24-Apr-13	29-Apr-13	0	P2B2110	P2B2130											
P2B2130	Footway	8	30-Apr-13	07-May-13	0	P2B2120	P2B2200											
Phase II B (2)		25	08-May-13	01-Jun-13	0													
P2B2200	Excavation	10	08-May-13	17-May-13	0	P2B2130	P2B2210											
P2B2210	Ducts (Street Lighting, Traffic Lights)	11	13-May-13	23-May-13	0	P2B2200	P2B2220											
P2B2220	Backfill	7	18-May-13	24-May-13	0	P2B2210	P2B2230											
P2B2230	Subbase, Kerb	10	23-May-13	01-Jun-13	0	P2B2220	P2B2240											
P2B2240	Surfacing	4	28-May-13	31-May-13	0	P2B2230	P3B3000											
Phase III B		27	01-Jun-13	27-Jun-13	0													
P3B3000	Excavation	7	01-Jun-13	07-Jun-13	0	P2B2240	P3B3010											
P3B3010	Ducts (Street Lighting, Traffic Lights)	10	08-Jun-13	17-Jun-13	0	P3B3000	P3B3020											
P3B3020	Backfill	7	18-Jun-13	24-Jun-13	0	P3B3010	P3B3030											
P3B3030	Subbase	7	21-Jun-13	27-Jun-13	0	P3B3020	P3B3040											
P3B3040	Surfacing	4	24-Jun-13	27-Jun-13	0	P3B3030	CNO1030											
Phase IC (Convention Avenue)		100	20-Feb-13	30-May-13	0													
P1C4000	Excavation	7	20-Feb-13	26-Feb-13	0	TAR8000, TAR8	P1C4010											
P1C4010	Drainages	18	24-Feb-13	13-Mar-13	0	P1C4000	P1C4020											
P1C4020	Ducts (Street Lighting, Traffic Lights)	21	06-Mar-13	26-Mar-13	0	P1C4010	P1C4030, M:											
P1C4030	Sewerage	21	06-Mar-13	26-Mar-13	0	P1C4020	P1C4040											
P1C4040	Fresh Water Main	21	11-Mar-13	31-Mar-13	0	P1C4030	P1C4050											
P1C4050	HEC Duct	21	11-Mar-13	31-Mar-13	0	P1C4040	P1C4060, M:											
P1C4060	Telecom Duct	21	11-Mar-13	31-Mar-13	0	P1C4050	P1C4070, M:											
P1C4070	Backfill	14	21-Mar-13	03-Apr-13	0	P1C4060	P1C4080											
P1C4080	Subbase, Kerb	12	28-Mar-13	08-Apr-13	0	P1C4070	P1C4090, P2											
P1C4090	Surfacing	4	27-May-13	30-May-13	0	P1C4080, MSW1	CNO1030											
Phase II C (Convention Avenue)		38	13-Apr-13	20-May-13	0													
P2C4100	Excavation	7	13-Apr-13	19-Apr-13	0	P1C4080	P2C4110											
P2C4110	Drainages	14	18-Apr-13	01-May-13	0	P2C4100	P2C4120, P2											
P2C4120	Duct (Traffic Light)	5	27-Apr-13	01-May-13	7	P2C4110	P2C4150											
P2C4130	Sewerage	21	18-Apr-13	08-May-13	0	P2C4110	P2C4140											
P2C4140	Fresh Water Main	21	18-Apr-13	08-May-13	0	P2C4130	P2C4150											
P2C4150	Backfill	4	09-May-13	12-May-13	0	P2C4140, P2C41	P2C4160											
P2C4160	Subbase	4	13-May-13	16-May-13	0	P2C4150	P2C4170											
P2C4170	Surfacing	4	17-May-13	20-May-13	0	P2C4160	P3C4200											



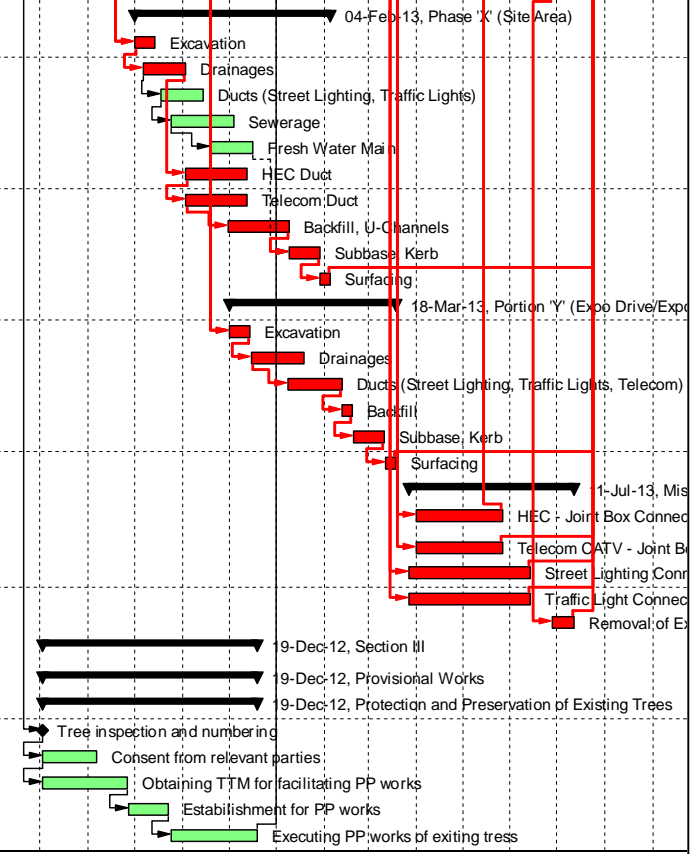
■	Actual Work
■	Remaining Work
■	Critical Remaining ...
◆	Milestone
▾	Summary

Date	Revision	Ch...	Approved
31-May-12	Rev. E	MF	KT
23-Jun-12	Rev. F	MF	KT
19-Jul-12	Rev. G	MF	KT
14-Aug-12	Rev. H	MF	KT
19-Sep-12	Rev. I	MF	KT
21-Nov-12	Rev. J	MF	KT
19-Feb-13	Rev. K	MF	KT
05-Mar-13	Rev. L	MF	KT

Contract No.: HK/2010/06
Wan Chai Development Phase II-
Central-Wan Chai Bypass over MTR Tuen Wan Line
 (Works Programme - Rev. L)



Activity ID	Activity Name	Original Duration	Start	Finish	Total Float	Predecessors	Successors	2011				2012				2013		
								Q1	Q2	Q3	Q4	Q1	Q2	Q3	Q4	Q1	Q2	Q3
Phase III C (Convention Avenue)																		
P3C4200	Excavation	4	21-May-13	15-Jun-13	0	P2C4170	P3C4210											15-Jun-13, Phase II
P3C4210	Sewerage	18	21-May-13	07-Jun-13	0	P3C4200	P3C4220											Excavation
P3C4220	Duct (Bullard, Traffic Lights)	7	28-May-13	03-Jun-13	0	P3C4210	P3C4230											Sewerage
P3C4230	Backfill	4	04-Jun-13	07-Jun-13	0	P3C4220	P3C4240											Duct (Bullard, Traffic L
P3C4240	Subbase, Kerb	4	08-Jun-13	11-Jun-13	0	P3C4230	P3C4250											Backfill
P3C4250	Surfacing	4	12-Jun-13	15-Jun-13	0	P3C4240	P4C4300											Subbase, Kerb
Phase IV C (Convention Avenue)																		
P4C4300	Excavation	4	16-Jun-13	19-Jun-13	0	P3C4250	P4C4310											27-Jun-13, Phase
P4C4310	Ducts (Traffic Lights)	4	20-Jun-13	23-Jun-13	0	P4C4300	P4C4320											Excavation
P4C4320	Backfill	4	20-Jun-13	23-Jun-13	0	P4C4310	P4C4330											Ducts (Traffic Light
P4C4330	Subbase, Kerb	4	20-Jun-13	23-Jun-13	0	P4C4320	P4C4340											Backfill
P4C4340	Surfacing	4	24-Jun-13	27-Jun-13	0	P4C4330	MSW7040											Subbase, Kerb
Phase 'X' (Site Area)																		
PXX5000	Excavation	127	01-Oct-12	04-Feb-13	0													04-Feb-13, Phase 'X' (Site Area)
PXX5010	Drainages	14	01-Oct-12	14-Oct-12	0	TAR8000, TAR80	PXX5010											Excavation
PXX5020	Ducts (Street Lighting, Traffic Lights)	28	06-Oct-12	02-Nov-12	0	PXX5000	PXX5050, PXX5030											Drainages
PXX5030	Sewerage	42	24-Oct-12	04-Dec-12	23	PXX5020	PXX5040											Ducts (Street Lighting, Traffic Lights)
PXX5040	Fresh Water Main	28	19-Nov-12	16-Dec-12	23	PXX5030	PXX5080											Sewerage
PXX5050	HEC Duct	40	03-Nov-12	12-Dec-12	0	PXX5010	PXX5060											Fresh Water Main
PXX5060	Telecom Duct	40	03-Nov-12	12-Dec-12	0	PXX5050	PXX5070											HEC Duct
PXX5070	Backfill, U-Channels	40	30-Nov-12	08-Jan-13	0	PXX5060	PXX5080											Telecom Duct
PXX5080	Subbase, Kerb	20	09-Jan-13	28-Jan-13	0	PXX5070, PXX5080	PXX5090											Backfill, U-Channels
PXX5090	Surfacing	7	29-Jan-13	04-Feb-13	0	PXX5080	CNO1030											Subbase, Kerb
Portion 'Y' (Expo Drive/Expo Drive Central)																		
PYY6000	Excavation	14	01-Dec-12	14-Dec-12	0	TAR8000, TAR80	PYY6010											18-Mar-13, Portion 'Y' (Expo Drive/Expo
PYY6010	Drainages	35	15-Dec-12	18-Jan-13	0	PYY6000	PYY6020											Excavation
PYY6020	Ducts (Street Lighting, Traffic Lights, Telecom)	35	08-Jan-13	11-Feb-13	0	PYY6010	PYY6030											Drainages
PYY6030	Backfill	7	12-Feb-13	18-Feb-13	0	PYY6020	PYY6040											Ducts (Street Lighting, Traffic Lights, Telecom)
PYY6040	Subbase, Kerb	21	19-Feb-13	11-Mar-13	0	PYY6030	PYY6050											Backfill
PYY6050	Surfacing	7	12-Mar-13	18-Mar-13	0	PYY6040	CNO1030											Subbase, Kerb
Miscellaneous Work																		
MSW7000	HEC - Joint Box Connection	56	01-Apr-13	26-May-13	0	P1C4050	P1C4090											1-Jul-13, Mis
MSW7010	Telecom CATV - Joint Box Connection	56	01-Apr-13	26-May-13	0	P1C4060	CNO1030											HEC - Joint Box Connec
MSW7020	Street Lighting Connection/Installation	79	27-Mar-13	13-Jun-13	0	P1C4020	CNO1030											Telecom CATV - Joint B
MSW7030	Traffic Light Connection/Installation	79	27-Mar-13	13-Jun-13	0	P1C4020	CNO1030											Street Lighting Conn
MSW7040	Removal of Existing Street Lighting	14	28-Jun-13	11-Jul-13	0	P4C4340	CNO1030											Traffic Light Connec
Section III																		
Provisional Works																		
Protection and Preservation of Existing Trees																		
PPT9000	Tree inspection and numbering	0	02-Aug-12*		181	CNO1010	PPT9010											9-Dec-12, Section III
PPT9010	Consent from relevant parties	31	02-Aug-12	06-Sep-12	181	PPT9000	PPT9020											9-Dec-12, Provisional Works
PPT9020	Obtaining TTM for facilitating PP works	48	02-Aug-12	26-Sep-12	181	PPT9010	PPT9030											9-Dec-12, Protection and Preservation of Existing Trees
PPT9030	Establishment for PP works	20	27-Sep-12	22-Oct-12	181	PPT9020	PPT9040											Tree inspection and numbering
PPT9040	Executing PP works of exiting tress	49	24-Oct-12	19-Dec-12	181	PPT9030	CNO1040											Consent from relevant parties



	Date	Revision	Ch...	Approved
Actual Work	31-May-12	Rev. E	MF	KT
Remaining Work	23-Jun-12	Rev. F	MF	KT
Critical Remaining ...	19-Jul-12	Rev. G	MF	KT
Milestone	14-Aug-12	Rev. H	MF	KT
Summary	19-Sep-12	Rev. I	MF	KT
	21-Nov-12	Rev. J	MF	KT
	19-Feb-13	Rev. K	MF	KT
	05-Mar-13	Rev. L	MF	KT

Contract No.: HK/2010/06
Wan Chai Development Phase II-
Central-Wan Chai Bypass over MTR Tuen Wan Line
 (Works Programme - Rev. L)



Activity ID	Activity Name	Rem Dur	Start	Finish	2013																	2014		
					October					November					December					January				
					23	30	07	14	21	28	04	11	18	25	02	09	16	23	30	06	13			
3MRP - Oct 2013 to Jan 2014																								
02 - PRE-CONSTRUCTION WORKS																								
02.3 - Method Statement / Shop Drawings																								
0230-1580	MS Interim Noise Semi Enclosure - Bridge F1A/F2A Submission	36	31-Dec-13	04-Feb-14																				
0230-1500	MS Bridge Demolition - Submission	28	06-Jan-14*	02-Feb-14																				
0230-1930	MS Marine Temp Pile Removal - No Adverse Comment	2	18-Sep-13 A	21-Oct-13																				
0230-1940	MS Beam Erection D1 to E2 - Submission	28	15-Nov-13*	12-Dec-13																				
0230-1950	MS Beam Erection D1 to E2 - Comment/Resubmission	28	13-Dec-13	09-Jan-14																				
0230-1960	MS Beam Erection D1 to E2 - No Adverse Comment	18	10-Jan-14	27-Jan-14																				
0230-1372	MS Segment Erection by Crane - Submission	4	20-Sep-13 A	23-Oct-13																				
0230-1374	MS Segment Erection by Crane - Comment/Resubmission	15	24-Oct-13	07-Nov-13																				
0230-1376	MS Segment Erection by Crane - No Adverse Comment	12	08-Nov-13	19-Nov-13																				
0230-2000	MS EVB ELS - Submission	0	19-Aug-13 A	19-Oct-13 A																				
0230-2010	MS EVB ELS - Comment/Resubmission	12	20-Oct-13	31-Oct-13																				
0230-2020	MS EVB ELS - No Adverse Comment	12	01-Nov-13	12-Nov-13																				
0230-2030	MS Beam Erection F8 to F15 - Submission	30	02-Dec-13*	31-Dec-13																				
0230-2040	MS Beam Erection F8 to F15 - Review/Comment	15	01-Jan-14	15-Jan-14																				
0230-2050	MS Beam Erection F8 to F15 - Resubmission	15	16-Jan-14	30-Jan-14																				
0230-2070	MS ADB Pre-bored H-pile - Resubmission	18	20-Oct-13	06-Nov-13																				
0230-2080	MS ADB Pre-bored H-pile - No Adverse Comment	15	07-Nov-13	21-Nov-13																				
0230-1780	MS Temporary Bridge TD - Submission	28	02-Jan-14*	29-Jan-14																				
0230-1420	MS Permanent Noise Barrier - Submission	28	12-Jan-14	08-Feb-14																				
0230-1820	MS Bridge Demolition - Submission	28	15-Jan-14*	11-Feb-14																				
02.4 - Contractor's Design and Build Items																								
0240-1041	Temp Bridge "TD" Design - Submission	48	01-Mar-13 A	06-Dec-13																				
0240-1042	Temp Bridge "TD" Design - ER review and comment	28	07-Dec-13	03-Jan-14																				
0240-1043	Temp Bridge "TD" Design - Resubmission	36	04-Jan-14	08-Feb-14																				
0240-1105	Int. Noise Enclosure Structural Design - Submission	16	20-Mar-13 A	04-Nov-13																				
0240-1110	Int. Noise Enclosure Structural Design - ER Review/Resubmission	28	05-Nov-13	02-Dec-13																				
0240-1112	Int. Noise Enclosure Structural Design - No Adverse Comment	28	03-Dec-13	30-Dec-13																				
0240-1113	Int. Noise Enclosure Structural - Shop Drawings Bridge F1A/F2A	60	31-Dec-13	28-Feb-14																				
0240-1127	Noise Barrier Structural Design - ER Review/Resubmission	11	30-May-13 A	30-Oct-13																				
0240-1128	Noise Barrier Structural Design - No Adverse Comment	28	31-Oct-13	27-Nov-13																				
0240-1131	Noise Barrier - Procurement/Sub-contractor	60	01-Nov-13	30-Dec-13																				
0240-1132	Noise Barrier Structural - Shop Drawings	90	31-Dec-13	30-Mar-14																				
0240-1134	Noise Barrier Panel - Submission	36	31-Dec-13	04-Feb-14																				
0240-1162	Perm. Noise Enclosure Structural Design - No Adverse Comment	0	15-Aug-13 A	03-Oct-13 A																				
0240-1163	Perm. and Int. Noise Enclosure - Procurement/Sub-contractor	60	01-Nov-13	30-Dec-13																				
0240-1164	Perm. Noise Enclosure Structural - Shop Drawings Bridge F1A/F2A	60	31-Dec-13	28-Feb-14																				
02.5 - Bridge Segment/Beam Off-site Precasting																								
0250-1700.21	Bridge Precast Beam Casting Bridge E Beam E1D-B	0	07-Sep-13 A	29-Sep-13 A																				
0250-1700.31	Bridge Precast Beam Casting Bridge E Beam E1D-C	0	20-Sep-13 A	15-Oct-13 A																				
0250-1700.41	Bridge Precast Beam Casting Bridge E Beam E2E1-A	15	16-Oct-13 A	03-Nov-13																				
0250-1700.51	Bridge Precast Beam Casting Bridge E Beam E2E1-B	18	23-Oct-13	09-Nov-13																				

- Remaining Level of Effort
- Actual Level of Effort
- Actual Work
- Remaining Work
- Critical Remaining Work
- ◆ Milestone

Contract HY/2009/19

Three Month Rolling Programme (20 October 2013 to 19 January 2014)

3MRP

3MRP - Oct 2013 to Jan 2013

Page 1 of 8

Activity ID	Activity Name	Rem Dur	Start	Finish	2013																2014	
					October					November					December					January		
					23	30	07	14	21	28	04	11	18	25	02	09	16	23	30	06	13	
0250-1700.61	Bridge Precast Beam Casting Bridge E Beam E2E1-C	18	30-Oct-13	16-Nov-13	Bridge Precast Beam Casting Bridge E Beam E2E1-C																	
0250-1600.13	Bridge D2 Pier D06 Precasting Segment (1-17) - Mould S1	0	09-Aug-13 A	18-Oct-13 A	Bridge D2 Pier D06 Precasting Segment (1-17) - Mould S1																	
0250-1600.14	Bridge D2 Pier D05 Precasting Segment (1-17) - Mould S1	42	20-Oct-13	30-Nov-13	Bridge D2 Pier D05 Precasting Segment (1-17) - Mould S1																	
0250-1600.15	Bridge D1 Pier D03 Precasting Segment (1-17) - Mould S1	42	01-Dec-13	11-Jan-14	Bridge D1 Pier D03 Precasting Segment (1-17) - Mould S1																	
0250-1650.16	Bridge F2 Pier F05 Precasting Segment (1-6) - Mould S2	0	04-Aug-13 A	27-Sep-13 A	Bridge F2 Pier F05 Precasting Segment (1-6) - Mould S2																	
0250-1650.17	Bridge D2 Pier D08 Precasting Segment (1-8) - Mould S2	10	04-Oct-13 A	29-Oct-13	Bridge D2 Pier D08 Precasting Segment (1-8) - Mould S2																	
0250-1650.18	Bridge D2 Pier D04 Precasting Segment (1-8) - Mould S2	24	30-Oct-13	22-Nov-13	Bridge D2 Pier D04 Precasting Segment (1-8) - Mould S2																	
0250-1650.19	Bridge D1 Pier D04 Precasting Segment (1-8) - Mould S2	24	23-Nov-13	16-Dec-13	Bridge D1 Pier D04 Precasting Segment (1-8) - Mould S2																	
0250-1650.20	Bridge D1 Pier D02 Precasting Segment (1-17) - Mould S2	42	17-Dec-13	27-Jan-14	Bridge D1 Pier D02 Precasting Segment (1-17) - Mould S2																	
0250-1655.01	Bridge F3 - F05 Segment - Pier Segment +1 (2 nos) - Mould T	0	21-Aug-13 A	05-Oct-13 A	Bridge F3 - F05 Segment - Pier Segment +1 (2 nos) - Mould T																	
0250-1655.02	Bridge F3 - F05 Segment - Remaining (4 nos) - Mould T	0	20-Sep-13 A	16-Oct-13 A	Bridge F3 - F05 Segment - Remaining (4 nos) - Mould T																	
0250-1655.024	Bridge F3 - F07 Segment - Remaining (10 nos) - Mould T	18	15-Jul-13 A	06-Nov-13	Bridge F3 - F07 Segment - Remaining (10 nos) - Mould T																	
03 - PRELIMINARY WORKS																						
03.3 - Interface Works																						
0330-1200	Agreement of HGHK Interim Temp Carpark	28	20-Jun-13 A	21-Nov-13	Agreement of HGHK Interim Temp Carpark																	
05 - SECTION 2 & 2A OF THE WORKS																						
05.1 - Cut & Cover Tunnel Ch 4855-4932 (APS Footprint)																						
05.1.1 - D-Wall Construction																						
0511-1091	Install Observation Well - EVB Area (Rem 8 nos.)	9	21-Oct-13	30-Oct-13	Install Observation Well - EVB Area (Rem 8 nos.)																	
0511-1095	Install King Post - EVB Area (20 nos.)	6	23-Aug-13 A	26-Oct-13	Install King Post - EVB Area (20 nos.)																	
0511-1100	Pump Test Ch 4855-4932	15	31-Oct-13	16-Nov-13	Pump Test Ch 4855-4932																	
05.1.2 - ELS																						
0512-1101	Excav Zone 1 EVB Area 1st Layer + Strut	15	04-Nov-13	20-Nov-13	Excav Zone 1 EVB Area 1st Layer + Strut																	
0512-1102	Excav Zone 2 EVB Area 2nd Layer + Strut	26	21-Nov-13	20-Dec-13	Excav Zone 2 EVB Area 2nd Layer + Strut																	
0512-1103	Excav Zone 3 EVB Area 3rd Layer + Strut	26	21-Dec-13	22-Jan-14	Excav Zone 3 EVB Area 3rd Layer + Strut																	
0512-1120	Excav Zone 4 EVB Area 1st Layer + Strut + Dem. Bulk Head Wall	18	21-Nov-13	11-Dec-13	Excav Zone 4 EVB Area 1st Layer + Strut + Dem. Bulk Head Wall																	
0512-1130	Excav Zone 5 EVB Area 1st Layer + Strut + Dem. Bulk Head Wall	25	12-Dec-13	11-Jan-14	Excav Zone 5 EVB Area 1st Layer + Strut + Dem. Bulk Head Wall																	
0512-1140	Excav Zone 6 EVB Area 1st Layer + Strut + Dem. Bulk Head Wall	29	13-Jan-14	18-Feb-14	Excav Zone 6 EVB Area 1st Layer + Strut + Dem. Bulk Head Wall																	
05.2 - Cut & Cover Tunnel Ch 4932-5149																						
05.2.1 - D-Wall Construction																						
0521-1900.15	D-wall Panel N73	0	03-Oct-13 A	12-Oct-13 A	D-wall Panel N73																	
0521-1900.20	D-wall Panel N71	0	13-Sep-13 A	02-Oct-13 A	D-wall Panel N71																	
0521-1900.30	D-wall Panel N72	9	15-Oct-13 A	30-Oct-13	D-wall Panel N72																	
0521-2145.15	D-wall Panel S79	0	18-Sep-13 A	08-Oct-13 A	D-wall Panel S79																	
0521-2165	Install Dewatering Well - Ch 4932-5149 (10 nos.)	18	31-Oct-13	20-Nov-13	Install Dewatering Well - Ch 4932-5149 (10 nos.)																	
0521-2166	Install Observation Well - Ch 4932-5149 (6 nos.)	18	31-Oct-13	20-Nov-13	Install Observation Well - Ch 4932-5149 (6 nos.)																	
0521-2167	Install Recharging Well - Ch 4932-5149 (2 nos.)	18	31-Oct-13	20-Nov-13	Install Recharging Well - Ch 4932-5149 (2 nos.)																	
0521-2168	Install King Posts - Ch 4932-5149 (4 nos.)	18	31-Oct-13	20-Nov-13	Install King Posts - Ch 4932-5149 (4 nos.)																	
0521-2170	Pump Test Ch 4932-5149	6	21-Nov-13	27-Nov-13	Pump Test Ch 4932-5149																	
05.2.2 - Barrette Construction																						
0522-2210.73	Barrette Pile BC53 Construction	1	05-Oct-13 A	21-Oct-13	Barrette Pile BC53 Construction																	
0522-2211	Complete Dismantling of Bentonite Plants at EVB Area	9	19-Aug-13 A	30-Oct-13	Complete Dismantling of Bentonite Plants at EVB Area																	
05.2.3 - ELS																						
0524-2888	Pump Sump - Sheet Piling	6	21-Oct-13	26-Oct-13	Pump Sump - Sheet Piling																	

- Remaining Level of Effort
- Actual Level of Effort
- Actual Work
- Remaining Work
- Critical Remaining Work
- Milestone

Contract HY/2009/19

Three Month Rolling Programme (20 October 2013 to 19 January 2014)

3MRP

3MRP - Oct 2013 to Jan 2013

Page 2 of 8

Activity ID	Activity Name	Rem Dur	Start	Finish	2013																	2014														
					October					November					December					January																
					23	30	07	14	21	28	04	11	18	25	02	09	16	23	30	06	13															
06 - SECTION 3 OF THE WORKS																																				
06.1 - Westbound - Pier 29-34																																				
0610-2120	Pier 29-1 Bored Pile	6	19-Sep-13 A	26-Oct-13	Pier 29-1 Bored Pile																															
0610-2122	Pier 29-2 Bored Pile	30	28-Oct-13	30-Nov-13																																
0610-2124	Pier 29-3 Bored Pile	30	02-Dec-13	07-Jan-14																																
0610-2126	Pier 29-4 Bored Pile	30	08-Jan-14	14-Feb-14																																
06.2 - Box Culvert U1																																				
0620-2590	1500mm Drainage MH 1-43 to 1-59A - Pipe Laying	0	21-Sep-13 A	30-Sep-13 A	1500mm Drainage MH 1-43 to 1-59A - Pipe Laying																															
0620-2600	1500mm Drainage Construct MH 1-43	3	02-Oct-13 A	23-Oct-13	1500mm Drainage Construct MH 1-43																															
0620-2610	1500mm Drainage MH 1-43 to 1-59A - Backfill + Extract Sheet Pile	6	02-Oct-13 A	30-Oct-13	1500mm Drainage MH 1-43 to 1-59A - Backfill + Extract Sheet Pile																															
0620-2630	1500mm Drainage MH 1-42 to 1-43 - Excavation	7	21-Oct-13	28-Oct-13	1500mm Drainage MH 1-42 to 1-43 - Excavation																															
0620-2640	1500mm Drainage MH 1-42 to 1-43 - Pipe Laying	5	29-Oct-13	02-Nov-13	1500mm Drainage MH 1-42 to 1-43 - Pipe Laying																															
0620-2650	1500mm Drainage Construct MH 1-42	12	04-Nov-13	16-Nov-13	1500mm Drainage Construct MH 1-42																															
0620-2660	1500mm Drainage MH 1-42 to 1-43 - Backfill + Extract Sheet Pile	9	18-Nov-13	27-Nov-13	1500mm Drainage MH 1-42 to 1-43 - Backfill + Extract Sheet Pile																															
06.3 - Admin Building																																				
0630-3100	Predrill for Adm Building (27 no) (3 set)	45	31-Oct-13	21-Dec-13																																
0630-3105	Admin Bldg Pile G.I. Report / Founding Level	18	23-Dec-13	14-Jan-14																																
0630-3110	Pre-bored H-pile for Adm bldg (55 no) (3 set)	130	15-Jan-14	24-Jun-14																																
10 - SECTION X OF THE WORKS																																				
10.1 - E/B Bridges (Bridge D, E and F)																																				
10.1.1 - Marine Pier Construction																																				
Pier F03 to F15																																				
1011-2205	Bearing intallation Pier F4 (E/B)	0	07-Oct-13 A	19-Oct-13 A																																
1011-2235	Bearing intallation Pier F5	9	14-Oct-13 A	30-Oct-13																																
1011-2261	Bearing intallation Pier F6	12	22-Oct-13	04-Nov-13																																
1011-2280	F7 Pier/Column Construction	0	04-Sep-13 A	27-Sep-13 A	F7 Pier/Column Construction																															
1011-2290	F7 Crosshead Construction	0	02-Oct-13 A	19-Oct-13 A	F7 Crosshead Construction																															
1011-2291	Bearing intallation Pier F7	12	29-Oct-13	11-Nov-13																																
1011-2305	F8 Pile Cap Construction	0	05-Aug-13 A	28-Sep-13 A	F8 Pile Cap Construction																															
1011-2310	F8 Pier/Column Construction	0	02-Sep-13 A	09-Oct-13 A	F8 Pier/Column Construction																															
1011-2320	F8 Crosshead Construction	24	21-Oct-13	16-Nov-13																																
1011-2345	Bearing intallation Pier F8	12	25-Nov-13	07-Dec-13																																
1011-2380	F9 Pile Cap Shutter Cofferdam	0	29-Jul-13 A	25-Sep-13 A	F9 Pile Cap Shutter Cofferdam																															
1011-3115	F9 Pile Cap Construction	6	26-Sep-13 A	26-Oct-13																																
1011-2390	F9 Pier/Column Construction	15	28-Oct-13	13-Nov-13																																
1011-2400	F9 Crosshead Construction	24	14-Nov-13	11-Dec-13																																
1011-2410	F10 Pile Cap Shutter Cofferdam	6	16-Sep-13 A	26-Oct-13	F10 Pile Cap Shutter Cofferdam																															
1011-3125	F10 Pile Cap Construction	21	28-Oct-13	20-Nov-13																																
1011-2420	F10 Pier/Column Construction	15	21-Nov-13	07-Dec-13																																
1011-2430	F10 Crosshead Construction	24	09-Dec-13	07-Jan-14																																
1011-2350	F11 Pile Cap Shutter Cofferdam	12	30-Sep-13 A	02-Nov-13																																
1011-3135	F11 Pile Cap Construction	21	04-Nov-13	27-Nov-13																																
1011-2360	F11 Pier/Column Construction	15	28-Nov-13	14-Dec-13																																
1011-2370	F11 Crosshead Construction	24	16-Dec-13	14-Jan-14																																

- Remaining Level of Effort
- Actual Level of Effort
- Actual Work
- Remaining Work
- Critical Remaining Work
- ◆ Milestone

Contract HY/2009/19

Three Month Rolling Programme (20 October 2013 to 19 January 2014)

3MRP

3MRP - Oct 2013 to Jan 2013

Page 5 of 8

Activity ID	Activity Name	Rem Dur	Start	Finish	2013																	2014	
					October							November					December					January	
					23	30	07	14	21	28	04	11	18	25	02	09	16	23	30	06	13		
1011-2075	F12 Dismantle Piling Platform	0	05-Aug-13 A	08-Oct-13 A	F12 Dismantle Piling Platform																		
1011-2440	F12 Pile Cap Shutter Cofferdam	18	21-Oct-13	09-Nov-13	F12 Pile Cap Shutter Cofferdam																		
1011-3145	F12 Pile Cap Construction	21	11-Nov-13	04-Dec-13	F12 Pile Cap Construction																		
1011-2450	F12 Pier/Column Construction	15	05-Dec-13	21-Dec-13	F12 Pier/Column Construction																		
1011-2460	F12 Crosshead Construction	24	23-Dec-13	21-Jan-14	F12 Crosshead Construction																		
1011-2080	F13 Dismantle Piling Platform	0	12-Aug-13 A	08-Oct-13 A	F13 Dismantle Piling Platform																		
1011-2470	F13 Pile Cap Shutter Cofferdam	18	04-Nov-13	23-Nov-13	F13 Pile Cap Shutter Cofferdam																		
1011-3155	F13 Pile Cap Construction	21	25-Nov-13	18-Dec-13	F13 Pile Cap Construction																		
1011-2480	F13 Pier/Column Construction	15	19-Dec-13	07-Jan-14	F13 Pier/Column Construction																		
1011-2085	F14 Dismantle Piling Platform	0	17-Aug-13 A	08-Oct-13 A	F14 Dismantle Piling Platform																		
1011-2500	F14 Pile Cap Shutter Cofferdam	18	18-Nov-13*	07-Dec-13	F14 Pile Cap Shutter Cofferdam																		
1011-3165	F14 Pile Cap Construction	21	09-Dec-13*	03-Jan-14	F14 Pile Cap Construction																		
1011-2510	F14 Pier/Column Construction	12	04-Jan-14	17-Jan-14	F14 Pier/Column Construction																		
1011-2520	F14 Crosshead Construction	18	18-Jan-14	11-Feb-14	F14 Crosshead Construction																		
1011-2975	F3 Extract Temp Pile	15	31-Oct-13	16-Nov-13	F3 Extract Temp Pile																		
1011-2985	F4 Extract Temp Pile	15	18-Nov-13	04-Dec-13	F4 Extract Temp Pile																		
1011-3105	F5 Extract Temp Pile	12	05-Dec-13	18-Dec-13	F5 Extract Temp Pile																		
1011-2265	F6 Extract Temp Pile	12	19-Dec-13	03-Jan-14	F6 Extract Temp Pile																		
1011-2025	F7 Extract Temp Pile	12	04-Jan-14	17-Jan-14	F7 Extract Temp Pile																		
1011-2055	F9 Extract Temp Pile	7	18-Jan-14	25-Jan-14	F9 Extract Temp Pile																		
1011-3075	Existing IEC Bridge F8-F14 - Remove Existing Road Lighting	0	29-Sep-13 A	06-Oct-13 A	Existing IEC Bridge F8-F14 - Remove Existing Road Lighting																		
1011-3095	Existing IEC Bridge F8-F14 - Demolish Existing Parapet	54	08-Oct-13 A	12-Dec-13	Existing IEC Bridge F8-F14 - Demolish Existing Parapet																		
Pier F01 to F02																							
1011-2890	F1B Pile Cap Shutter Cofferdam	18	06-Jan-14*	25-Jan-14	F1B Pile Cap Shutter Cofferdam																		
1011-2965	Extract Temp Pile F1	0	06-Sep-13 A	30-Sep-13 A	Extract Temp Pile F1																		
1011-2963	Extract Temp Pile F2	9	30-Sep-13 A	30-Oct-13	Extract Temp Pile F2																		
10.1.2 - Land Pier Construction																							
Pier D05 to D07																							
1012-1500	Pier D05 Excavation and Lateral Support	18	21-Oct-13	09-Nov-13	Pier D05 Excavation and Lateral Support																		
1012-1590	Pier D05 - Modify Tunnel Lateral Support	18	21-Oct-13	09-Nov-13	Pier D05 - Modify Tunnel Lateral Support																		
1012-1600	Pier D05 - Break D-wall / Pile head	18	11-Nov-13	30-Nov-13	Pier D05 - Break D-wall / Pile head																		
1012-1610	Pier D05 - Pile Cap	10	02-Dec-13	12-Dec-13	Pier D05 - Pile Cap																		
1012-1620	Pier D05 Construct Pier/Column	9	13-Dec-13	23-Dec-13	Pier D05 Construct Pier/Column																		
1012-1630	Pier D05 Construct Crosshead	18	24-Dec-13	15-Jan-14	Pier D05 Construct Crosshead																		
1012-1640	Bearing installation (pier D05)	12	16-Jan-14	29-Jan-14	Bearing installation (pier D05)																		
1012-1360	Pier D07 Construct Crosshead	0	07-Sep-13 A	03-Oct-13 A	Pier D07 Construct Crosshead																		
1012-1365	Pier D07 Bearing Installation	12	31-Oct-13	13-Nov-13	Pier D07 Bearing Installation																		
1012-1305	Pier D06 Drive Sheet Pile + ELS	0	08-Jul-13 A	27-Sep-13 A	Pier D06 Drive Sheet Pile + ELS																		
1012-1310	Pier D06 Construct Pile Cap	0	28-Sep-13 A	09-Oct-13 A	Pier D06 Construct Pile Cap																		
1012-1320	Pier D06 Construct Pier/Column	4	11-Oct-13 A	24-Oct-13	Pier D06 Construct Pier/Column																		
1012-1330	Pier D06 Construct Crosshead	15	25-Oct-13	11-Nov-13	Pier D06 Construct Crosshead																		
1012-1370	Pier D06 Bearing Installation	12	12-Nov-13	25-Nov-13	Pier D06 Bearing Installation																		
Pier D01 to D04																							
1012-1390	Pier D01 Construct Pier/Column	0	21-Sep-13 A	19-Oct-13 A	Pier D01 Construct Pier/Column																		

- █ Remaining Level of Effort
- █ Actual Level of Effort
- █ Actual Work
- █ Remaining Work
- █ Critical Remaining Work
- ◆ Milestone

Contract HY/2009/19

Three Month Rolling Programme (20 October 2013 to 19 January 2014)

3MRP

3MRP - Oct 2013 to Jan 2013

Activity ID	Activity Name	Rem Dur	Start	Finish	2013																	2014	
					October							November					December					January	
					23	30	07	14	21	28	04	11	18	25	02	09	16	23	30	06	13		
1012-1395	Pier D01 Crosshead Temp Work Design Submit/Approve	24	21-Oct-13	16-Nov-13	Pier D01 Crosshead Temp Work Design Submit/Approve																		
1012-1400	Pier D01 Construct Crosshead	18	18-Nov-13	07-Dec-13	Pier D01 Construct Crosshead																		
1012-1570	Pier D01 Bearing installation	6	09-Dec-13	14-Dec-13	Pier D01 Bearing installation																		
1012-1470	Pier D04 Construct Pad Footing	9	28-Nov-13	07-Dec-13	Pier D04 Construct Pad Footing																		
1012-1480	Pier D04 Construct Pier/Column	9	09-Dec-13	18-Dec-13	Pier D04 Construct Pier/Column																		
1012-1490	Pier D04 Construct Crosshead	18	19-Dec-13	10-Jan-14	Pier D04 Construct Crosshead																		
1012-1540	Bearing installation (pier D04)	12	11-Jan-14	24-Jan-14	Bearing installation (pier D04)																		
1012-1440	Pier D03 Construct Pad Footing	9	07-Dec-13	17-Dec-13	Pier D03 Construct Pad Footing																		
1012-1450	Pier D03 Construct Pier/Column	12	18-Dec-13	02-Jan-14	Pier D03 Construct Pier/Column																		
1012-1460	Pier D03 Construct Crosshead	18	03-Jan-14	23-Jan-14	Pier D03 Construct Crosshead																		
1012-1410	Pier D02 Construct Pad Footing	9	11-Jan-14	21-Jan-14	Pier D02 Construct Pad Footing																		
10.1.3 - E/B Bridge Construction																							
Bridge D3																							
1013-1110	Bridge D3 Stitching at midspan between D10 and D11	0	21-Sep-13 A	24-Sep-13 A	Bridge D3 Stitching at midspan between D10 and D11																		
1013-1080	Bridge D3 Segment Launching from Abutment D12 (4 nos)	4	08-Nov-13	12-Nov-13	Bridge D3 Segment Launching from Abutment D12 (4 nos)																		
1013-1120	Bridge D3 Stitching at midspan between D11 and D12	4	13-Nov-13	16-Nov-13	Bridge D3 Stitching at midspan between D11 and D12																		
1013-1130	Bridge D3 Permanent Stressing	6	18-Nov-13	23-Nov-13	Bridge D3 Permanent Stressing																		
Bridge F1A																							
1013-1155	Bridge F1A Pier Segments at D12+F1A+F2A	4	10-Oct-13 A	24-Oct-13	Bridge F1A Pier Segments at D12+F1A+F2A																		
1013-1170	Bridge F1A Segment Launching from Pier F1A (12 nos)	7	25-Oct-13	01-Nov-13	Bridge F1A Segment Launching from Pier F1A (12 nos)																		
1013-1160	Bridge F1A Segment Launching from Abutment D12 (4 nos)	5	02-Nov-13	07-Nov-13	Bridge F1A Segment Launching from Abutment D12 (4 nos)																		
1013-1200	Bridge F1A Stitching at midspan between D12 and F1A	3	08-Nov-13	11-Nov-13	Bridge F1A Stitching at midspan between D12 and F1A																		
1013-1180	Bridge F1A Segment Launching from Pier F2A (11 nos)	7	18-Nov-13	25-Nov-13	Bridge F1A Segment Launching from Pier F2A (11 nos)																		
1013-1190	Bridge F1A Segment Launching from Pier F3 (6 nos)	7	26-Nov-13	03-Dec-13	Bridge F1A Segment Launching from Pier F3 (6 nos)																		
1013-1210	Bridge F1A Stitching at midspan between F1A and F2A	3	26-Nov-13	28-Nov-13	Bridge F1A Stitching at midspan between F1A and F2A																		
1013-1220	Bridge F1A Stitching at midspan between F2A and F3	3	04-Dec-13	06-Dec-13	Bridge F1A Stitching at midspan between F2A and F3																		
1013-1230	Bridge F1A Permanent Stressing	6	07-Dec-13	13-Dec-13	Bridge F1A Permanent Stressing																		
Bridge F2A																							
1013-1270	Bridge F2A Segment Launching from Pier F4 (13 nos)	8	05-Dec-13	13-Dec-13	Bridge F2A Segment Launching from Pier F4 (13 nos)																		
1013-1260	Bridge F2A Segment Launching from Pier F3 (5 nos)	5	14-Dec-13	19-Dec-13	Bridge F2A Segment Launching from Pier F3 (5 nos)																		
1013-1280	Bridge F2A Segment Launching from Pier F5 (6 nos)	7	20-Dec-13	28-Dec-13	Bridge F2A Segment Launching from Pier F5 (6 nos)																		
1013-1330	Bridge F2A Stitching at midspan between F3 and F4	3	20-Dec-13	23-Dec-13	Bridge F2A Stitching at midspan between F3 and F4																		
1013-1340	Bridge F2A Stitching at midspan between F4 and F5	3	30-Dec-13	02-Jan-14	Bridge F2A Stitching at midspan between F4 and F5																		
1013-1350	Bridge F2A Permanent Stressing	6	11-Jan-14	17-Jan-14	Bridge F2A Permanent Stressing																		
Bridge F3A																							
1013-1290	Bridge F3A Segment Launching from Pier F5 (6 nos)	7	18-Jan-14	25-Jan-14	Bridge F3A Segment Launching from Pier F5 (6 nos)																		
Bridge D2																							
1013-1480	Bridge D2 Segment Launching by Crane Pier D07 T-span (17 nos)	21	14-Nov-13	07-Dec-13	Bridge D2 Segment Launching by Crane Pier D07 T-span (17 nos)																		
1013-1490	Bridge D2 Segment Launching by Crane Pier D06 T-span (17 nos)	18	09-Dec-13	30-Dec-13	Bridge D2 Segment Launching by Crane Pier D06 T-span (17 nos)																		
1013-1520	Bridge D2 Stitching at midspan between D07-D08	3	09-Dec-13	11-Dec-13	Bridge D2 Stitching at midspan between D07-D08																		
1013-1470	Bridge D2 Segment Launching by Crane Pier D08 End-span (8 nos)	9	31-Dec-13	10-Jan-14	Bridge D2 Segment Launching by Crane Pier D08 End-span (8 nos)																		
1013-1530	Bridge D2 Stitching at midspan between D06-D07	3	31-Dec-13	03-Jan-14	Bridge D2 Stitching at midspan between D06-D07																		
All E/B Bridges (Common)																							
1013-1770	Procurement of Parapet Sub-contractor	48	21-Oct-13	14-Dec-13	Procurement of Parapet Sub-contractor																		

- █ Remaining Level of Effort
- █ Actual Level of Effort
- █ Actual Work
- █ Remaining Work
- █ Critical Remaining Work
- ◆ Milestone

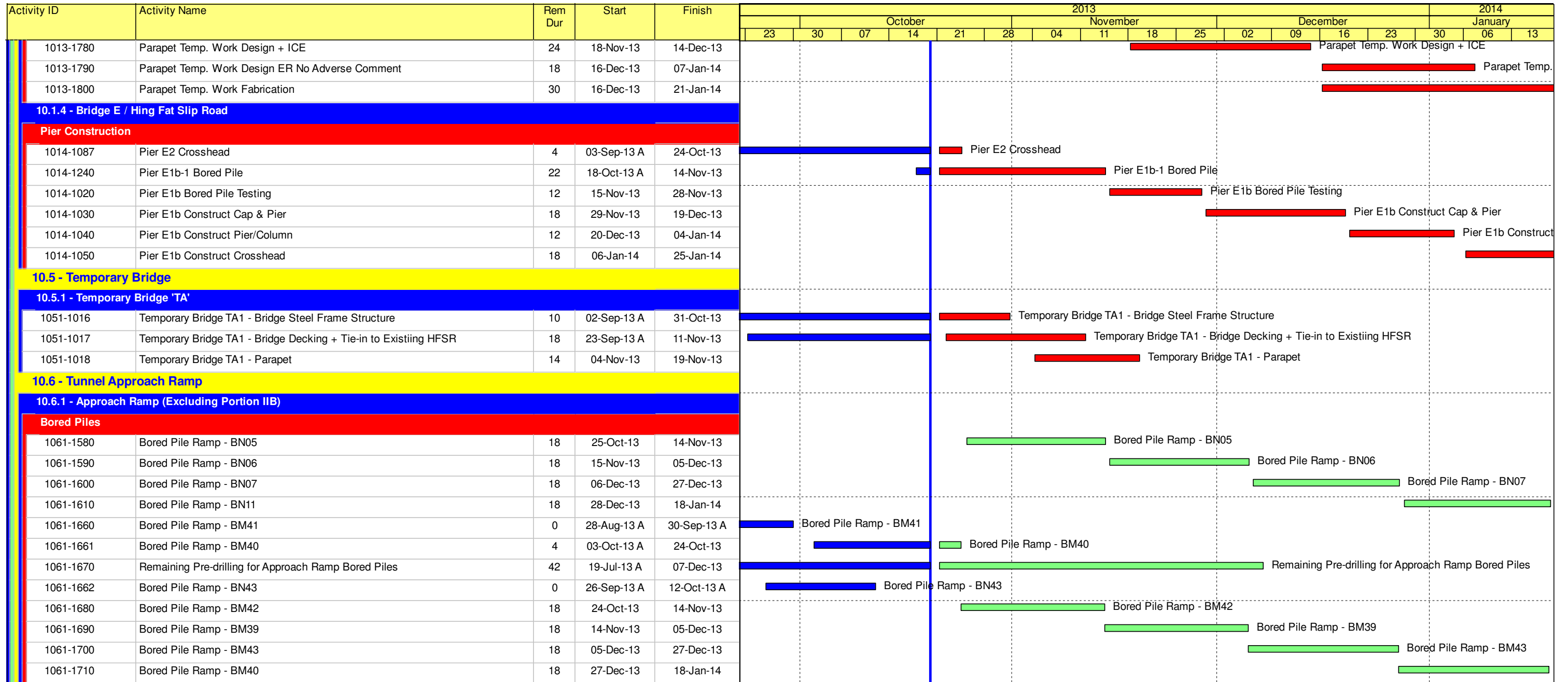
Contract HY/2009/19

Three Month Rolling Programme (20 October 2013 to 19 January 2014)

3MRP

3MRP - Oct 2013 to Jan 2013

Page 7 of 8



Remaining Level of Effort
 Actual Level of Effort
 Actual Work
 Remaining Work
 Critical Remaining Work
 Milestone

Contract HY/2009/19
Three Month Rolling Programme (20 October 2013 to 19 January 2014)

Activity ID	Activity Name	Original Duration	Start	Finish	Total Float	Free Float	2013												2014				
							October				November				December				January				
							29	06	13	20	27	03	10	17	24	01	08	15	22	29	05	12	19
HY/2010/08: CWB-SR8 Three Months Rolling Programme_updated up to 20131020																							
Works in SR8																							
SR8 ZONE 1B, Cha.511.654 to Ch.490																							
Initial Works																							
SR8_1120	Install new traffic signs prior to removal of existing gantry	6	24-Sep-13 A	26-Oct-13	128	0	Install new traffic signs prior to removal of existing gantry																
SR8_1135	Diversion of footpath	30	24-Sep-13 A	23-Nov-13	128	0	Diversion of footpath																
SR8_1160	Utility Diversion - Water Mains along Seafront	12	25-Nov-13	07-Dec-13	128	0	Utility Diversion - Water Mains along Seafront																
SR8_1170	Utility Diversion - Town Gas Pipes along Sea Front	18	09-Dec-13	31-Dec-13	186	186	Utility Diversion - Town Gas Pipes along Sea Front																
Sheet Piling Works Stage 1A at Zone 1B (VP Road Seaside)																							
A2700	Mobilisation of Sheet Piling Works	7	09-Dec-13	16-Dec-13	128	0	Mobilisation of Sheet Piling Works																
A2710	Carry out pre-boring for sheet piling works (Stage 1A - 14 holes)	14	17-Dec-13	04-Jan-14	128	0	Carry out pre-boring for sheet piling works																
A2720	Install Sheet Piles Stage 1A	11	06-Jan-14	17-Jan-14	128	0	Install Sheet Piles																
A2730	Demobilisation Stage 1A	7	18-Jan-14	25-Jan-14	128	0	Demobilisation Stage 1A																
Pipe Piling Works Stage 1A at Zone 1B (VP Road Seaside)																							
A25220	Mobilisation of Pipe Piling Works Stage 1A	7	27-Jan-14	06-Feb-14	128	0	Mobilisation of Pipe Piling Works Stage 1A																
VP / IEC West Bound (SR8 ZONE 6, Ch.430 to Ch.420)																							
A25200	Commencement of Pipe pile Works	0	26-Oct-13*		241	241	Commencement of Pipe pile Works																
Stage 1A1																							
A3040	Mobilisation for Sheet Piling Works	10	08-Oct-13 A	18-Oct-13 A			Mobilisation for Sheet Piling Works																
A3050	Carry out Pre-boring for Sheet Piling works	6	09-Oct-13 A	18-Nov-13	39	0	Carry out Pre-boring for Sheet Piling works																
A3060	Install Sheet Piles	30	09-Oct-13 A	23-Dec-13	39	0	Install Sheet Piles																
A3080	Test boring	10	09-Oct-13 A	07-Jan-14	39	0	Test boring																
Stage 1A2																							
A3090	Carry out Pre-boring for Sheet Piling works	8	08-Jan-14	16-Jan-14	39	0	Carry out Pre-boring for Sheet Piling works																
A3100	Install Sheet Piles	26	17-Jan-14	19-Feb-14	39	0	Install Sheet Piles																
Tree Transplanting, up to 400mm dia																							
Tree Zones 1-5																							
A2440	Trees transplanting/tree removal - Zones 3, 4 & 5	12	06-Aug-13 A	22-Oct-13 A			Trees transplanting/tree removal - Zones 3, 4 & 5																
A2460	Trees transplanting/tree removal - Zones 1 & 2	8	21-May-13 A	31-Oct-13	236	0	Trees transplanting/tree removal - Zones 1 & 2																
Ground Investigation and Instrumentation																							
A3030	Carry Out Site Formation	19	18-Sep-13 A	11-Nov-13	39	0	Carry Out Site Formation																
Victoria Park Side (VP Road & IEC West Bound)																							
A3070	Demobilisation of Sheet Piling Works	7	24-Dec-13	03-Jan-14	184	184	Demobilisation of Sheet Piling Works																
Tree Transplanting, 400 to 500mm dia. (6 nos.)																							
A1880	Root cut resting period	52	28-Jul-13 A	03-Oct-13 A			Root cut resting period																
A1870	Excavation & root pruning on last 2 opposite sides	1	28-Jun-13 A	05-Oct-13 A			Excavation & root pruning on last 2 opposite sides																
A1895	Trees transplanting/tree removal	18	04-Oct-13 A	22-Oct-13 A			Trees transplanting/tree removal																
A1899	Completion of trees transplanting @ Zone 6 along SR8	0		22-Oct-13 A			Completion of trees transplanting @ Zone 6 along SR8																

- Remaining Level of Effort
- Actual Work
- Remaining Work
- Critical Remaining Work
- Milestone

Page 1 of 3

Contract No. HY/2010/08: Central - Wanchai Bypass Tunnel +(Slip Road 8 Section) - 3 Months Rolling Programme






Date	Revision	Checked	Approved
24-Jul-13	Updated to 20th July 2013	DML/WC	
23-Aug-13	Updated to 20th Aug 2013	DML/WC	
23-Sep-13	Updated to 20th Sep 2013	DML/WC	
25-Oct-13	Updated to 20th Oct 2013	DML/WC	

Activity ID	Activity Name	Original Duration	Start	Finish	Total Float	Free Float	2013												2014				
							October				November				December				January				
							29	06	13	20	27	03	10	17	24	01	08	15	22	29	05	12	19
SR8 ZONE 7, Cha.420 to Ch.317.548																							
Temporary Traffic Diversion																							
A2620	Site Ingress / Egress near Tree Zone 9	4	21-Oct-13*	24-Oct-13	230	0																	
A2630	Site Ingress / Egress near Tree Zone 1	7	21-Oct-13	28-Oct-13	239	239																	
A2640	Tree Felling at Tsing Fung Street	6	01-Nov-13*	07-Nov-13	230	230																	
Utility Provision and Utility Diversion at VP																							
A2515	Construction of Transformer Pillar in VP (Tsing Fung Street)	18	10-Sep-13 A	09-Nov-13	204	0																	
A2520	Diversion of HEC 11kv Cables	30	21-Oct-13*	23-Nov-13	204	0																	
A2530	Water Supply Provision	12	25-Nov-13	07-Dec-13	204	0																	
A2540	Power Supply Provision	12	25-Nov-13	07-Dec-13	204	204																	
Tree Transplanting, up to 400mm dia. (44 nos.)																							
Tree Zones 6, 7, 8, 10 & 11																							
A2470	Trees transplanting/tree removal - Zones 6, 7 & 8	12	01-Aug-13 A	22-Oct-13 A																			
A25180	Trees transplanting/tree removal - Zone 10 & 11	6	12-Sep-13 A	26-Oct-13	22	4																	
Tree Transplanting, 400 to 500mm dia. (8 nos.)																							
A1930	Excavation & root pruning on last 2 opposite sides	1	03-Jun-13 A	19-Oct-13 A																			
A1940	Root cut resting period	50	20-Oct-13 A	17-Dec-13	-28	0																	
A2510	Completion of trees transplanting @ Zone 7 along SR8	0		24-Dec-13*	-28	190																	
A25120	Trees transplanting/tree removal	12	21-May-13 A	24-Dec-13	-28	0																	
Tree Transplanting, above 500mm dia. (7 nos.)																							
A1970	Excavation & root pruning on next 2 opposite sides	1	19-Sep-13 A	21-Oct-13	80	0																	
A1980	Root cut resting period	77	20-Sep-13 A	22-Jan-14	80	0																	
A1990	Excavation & root pruning on last 2 opposite sides	1	23-Jan-14	23-Jan-14	80	0																	
A2000	Root cut resting period	75	24-Jan-14	29-Apr-14	80	0																	
VP / IEC East Bound (SR8 ZONE 6, Ch.430 to Ch.420)																							
Stage 1																							
A2410	Erect walkway along seawall	28	21-Sep-13 A	21-Nov-13	90	0																	
A2430	Carry out utilities diversion (HEC 11kVa cables)	19	04-Oct-13 A	13-Dec-13	90	0																	
A2435	Construction working platform	4	09-Sep-13 A	18-Dec-13	90	0																	
A2450	Carry out utilities diversion (Water Main, Telecom)	13	19-Dec-13	06-Jan-14	90	0																	
A2480	Mobilization for sheet piling and pipe piling works	9	07-Jan-14	16-Jan-14	90	0																	
Stage 1A																							
A2500	Carry out pre-boring for sheet piling work	7	17-Jan-14	24-Jan-14	90	0																	
A2600	Pre-boring SPW for Treatment for Cable Trough	14	25-Jan-14	13-Feb-14	90	0																	
SR8 Zone 8,																							
Tree Zone 19																							
A1250	Root cut resting period	52	23-Aug-13 A	04-Oct-13 A																			
A1290	Trees transplanting / tree removal	4	05-Oct-13 A	12-Oct-13 A																			
Children's Playground																							

- Remaining Level of Effort
- Actual Work
- Remaining Work
- Critical Remaining Work
- Milestone

Date	Revision	Checked	Approved
24-Jul-13	Updated to 20th July 2013	DML/WC	
23-Aug-13	Updated to 20th Aug 2013	DML/WC	
23-Sep-13	Updated to 20th Sep 2013	DML/WC	
25-Oct-13	Updated to 20th Oct 2013	DML/WC	

Activity ID	Activity Name	Original Duration	Start	Finish	Total Float	Free Float	2013												2014					
							October				November				December				January					
							29	06	13	20	27	03	10	17	24	01	08	15	22	29	05	12	19	26
A1160	Demolition of existing pond	16	14-Sep-13 A	04-Oct-13 A			Demolition of existing pond																	
A1190	Backfill and paving of Base Slab	12	05-Oct-13 A	02-Nov-13	196	0	Backfill and paving of Base Slab																	
A1200	Construction of Foundation	14	05-Oct-13 A	19-Nov-13	196	0	Construction of Foundation																	
A1150	Tree protection	30	05-Oct-13 A	23-Nov-13	216	15	Tree protection																	
A1210	Construction of Drainage	12	20-Nov-13	03-Dec-13	196	0	Construction of Drainage																	
A2490	Start of Re provisioning works for CP	0	12-Dec-13*		201	201	Start of Re provisioning works for CP																	
A1220	Rubber Mat Installation	12	04-Dec-13	17-Dec-13	196	196	Rubber Mat Installation																	
Works for Public Works Regional Laboratory (North Lantau)																								
Transformer Room																								
PWRL_0770	Aplication for Permanent CLP Power (900A)	1	21-Oct-13*	21-Oct-13	0	0	Application for Permanent CLP Power (900A)																	
PWRL_0780	CLP Vetting and Approval	30	22-Oct-13	25-Nov-13	0	0	CLP Vetting and Approval																	
PWRL_0790	Construction of RC Transformer Room	80	26-Nov-13	05-Mar-14	0	0	Construction of RC Transformer Room																	
Dangerous Goods Store																								
PWRL_0560	Waterproofing to roof	1	15-Oct-13 A	18-Oct-13 A			Waterproofing to roof																	
PWRL_0535	E&M installation (wiring, lighting fixtures, AC unit, etc.)	8	15-Oct-13 A	29-Oct-13	231	0	E&M installation (wiring, lighting fixtures, AC unit, etc.)																	
PWRL_0540	Metal works (door, grill, grating etc.)	9	21-Oct-13 A	06-Nov-13	231	0	Metal works (door, grill, grating etc.)																	
PWRL_0550	Finishing Works	11	15-Oct-13 A	06-Nov-13	231	0	Finishing Works																	

-  Remaining Level of Effort
-  Actual Work
-  Remaining Work
-  Critical Remaining Work
-  Milestone

Date	Revision	Checked	Approved
24-Jul-13	Updated to 20th July 2013	DML/WC	
23-Aug-13	Updated to 20th Aug 2013	DML/WC	
23-Sep-13	Updated to 20th Sep 2013	DML/WC	
25-Oct-13	Updated to 20th Oct 2013	DML/WC	